

Planning - Oxford City Planning Committee

On **Tuesday 19 July 2022** At **6.00 pm**

www.oxford.gov.uk



Presentations

Contents

Note: Planning Committee presentations contain mostly pictures, maps and plans. These are not in an accessible format.

To see full details of the application including full plans, representations, public comments and supplementary information, please [click here](#) and enter the relevant Planning Reference number in the search box

3.	21/01176/FUL: Former Dominion Oils Site, Railway Lane, Oxford OX4 4PY	3 - 38
4.	22/01215/FUL: Anna Watts Building, Radcliffe Observatory Quarter, Woodstock Road, Oxford OX2 6GG	39 - 42
5.	21/03582/FUL: The Deaf and Hard of Hearing Centre, 10 Littlegate Street, Oxford OX1 1RL	43 - 62
6.	21/03583/LBC: The Deaf and Hard of Hearing Centre, 10 Littlegate Street, Oxford OX1 1RL	63 - 76
7.	22/00289/FUL: 75 Langley Close, Oxford OX3 7DB	77 - 90

The agenda, reports and any additional supplements can be found together with this supplement on the committee meeting webpage.

*View or subscribe to updates for agendas, reports and minutes at mycouncil.oxford.gov.uk.
All public papers are available from the calendar link to this meeting once published*

Oxford City Council, Town Hall, St Aldate's Oxford OX1 1BX

This page is intentionally left blank

Oxford City Planning Committee Presentation

www.oxford.gov.uk



21/01176/FUL

3

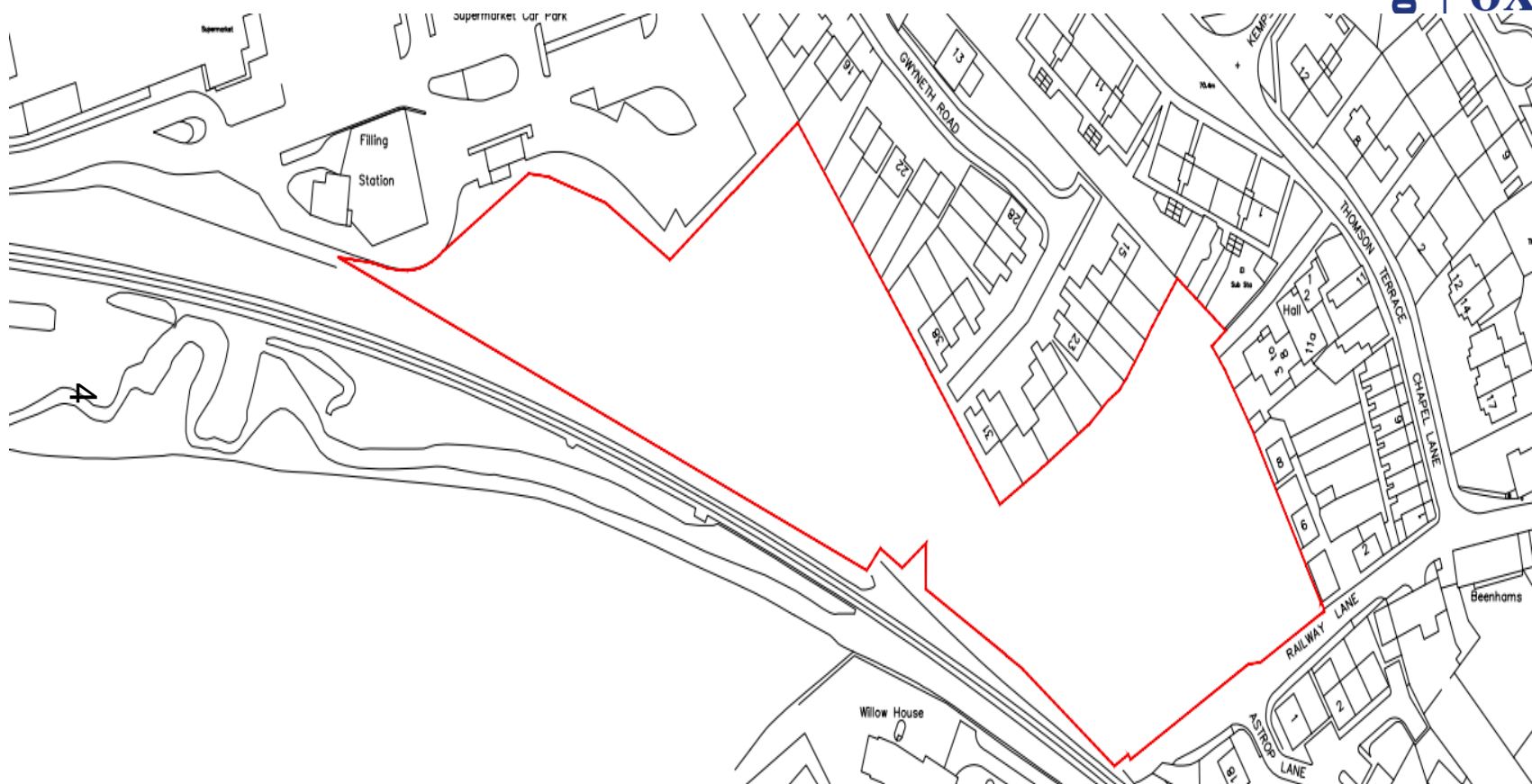
**Redevelopment of Dominion Oils,
Railway Lane, Littlemore**

19th July 2022



Site Location Plan

oxford.gov.uk



Aerial Photo

www.oxford.gov.uk



View down Railway Lane



www.oxford.gov.uk



Entrance of the site



www.oxford.gov.uk



View up Railway Lane



www.oxford.gov.uk



Views across the site





www.oxford.gov.uk



Views of eastern boundary and 4 Railway Lane



www.oxford.gov.uk



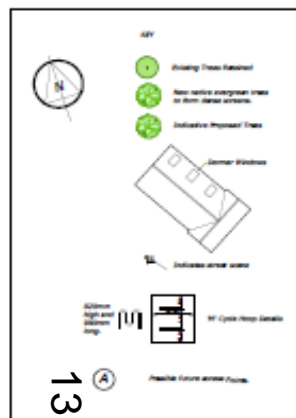
Eastern boundary



www.oxford.gov.uk



Proposed site plan



Proposed Railway Lane Frontage



LAND AT RAILWAY
LITTLEMORE, OX

Proposed Railway Lane Frontage

www.oxford.gov.uk



Landscape Framework

oxford.gov.uk



OXFORD
CITY
COUNCIL



rd.gov.uk



17



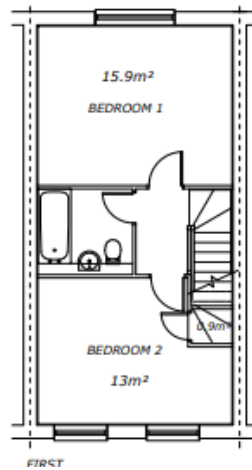
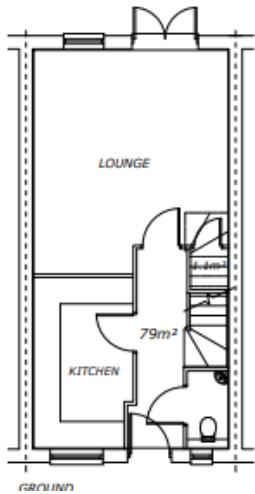
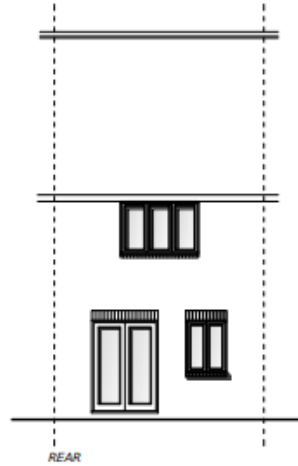
Proposed sections



STREET SCENE 3



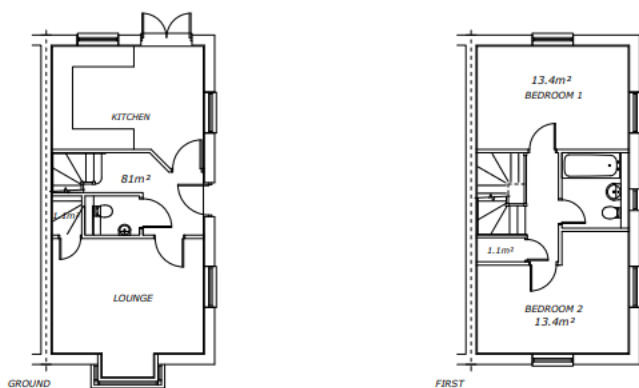
Type 1



Type 2



20



www.oxford.gov.uk



Type 3A and 3B

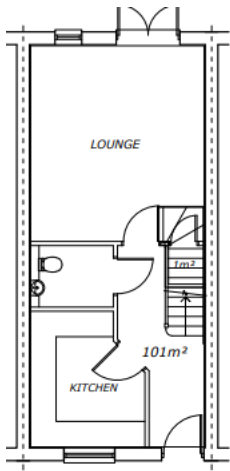
www.oxford.gov.uk



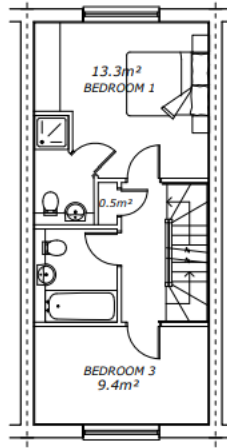
FRONT ELEVATION A



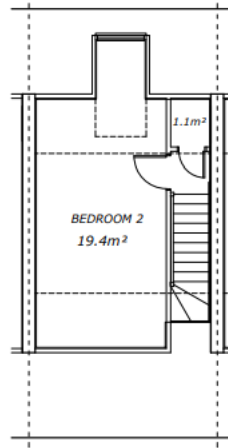
FRONT ELEVATION B



GROUND FLOOR PLAN



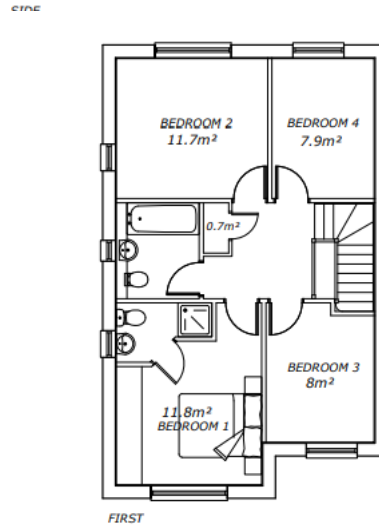
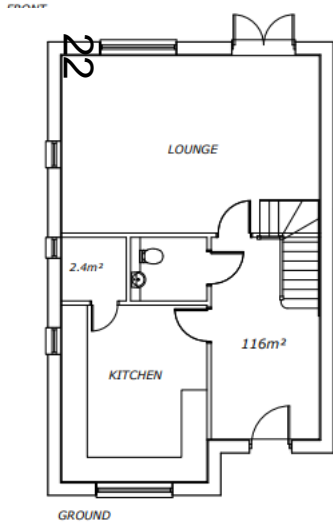
FIRST FLOOR PLAN



SECOND FLOOR PLAN



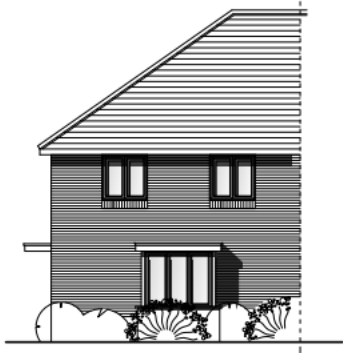
Type 4A



www.oxford.gov.uk



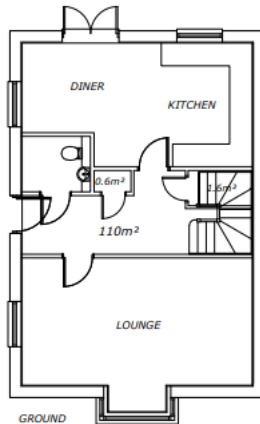
Type 5



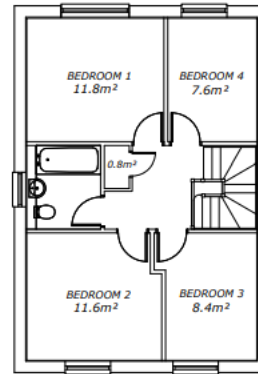
FRONT



SIDE



GROUND



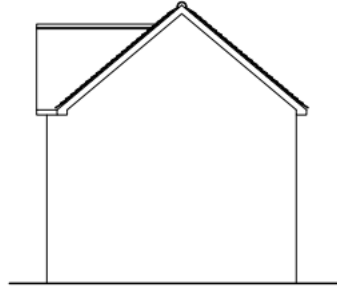
FIRST



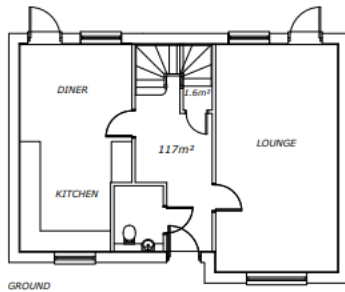
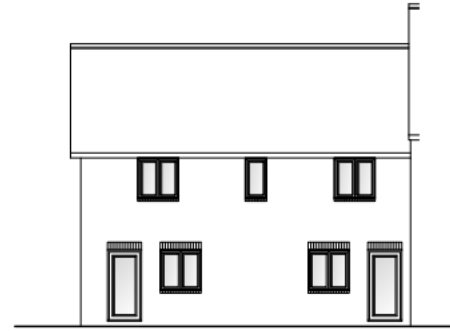
Type 6



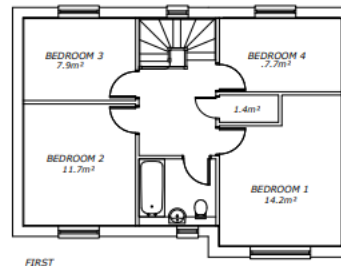
FRONT



SIDE



GROUND



FIRST

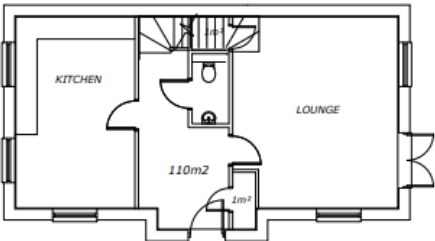
www.oxford.gov.uk



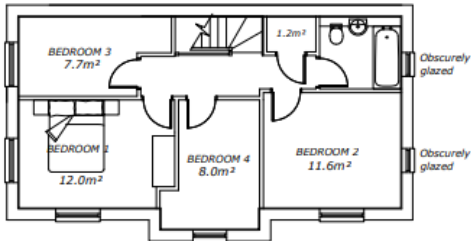
Type 9



FORD
CITY
UNCIL



GROUND



FIRST

25



RAILWAY LANE

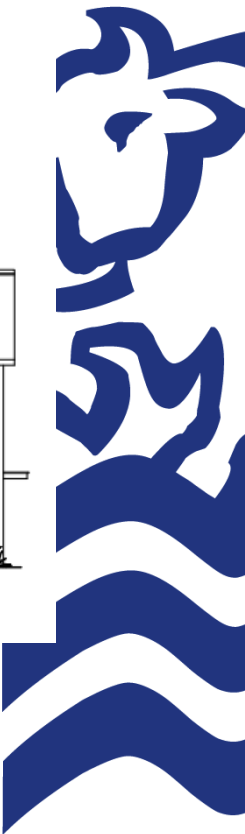


REAR



PLOT 2

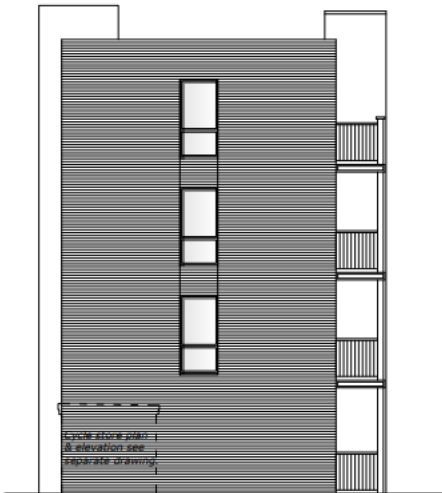
ESTATE FRONT



Block A Front, Rear and Side

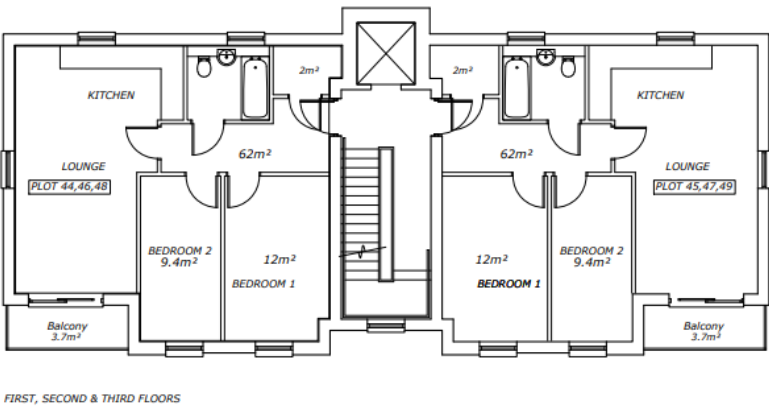
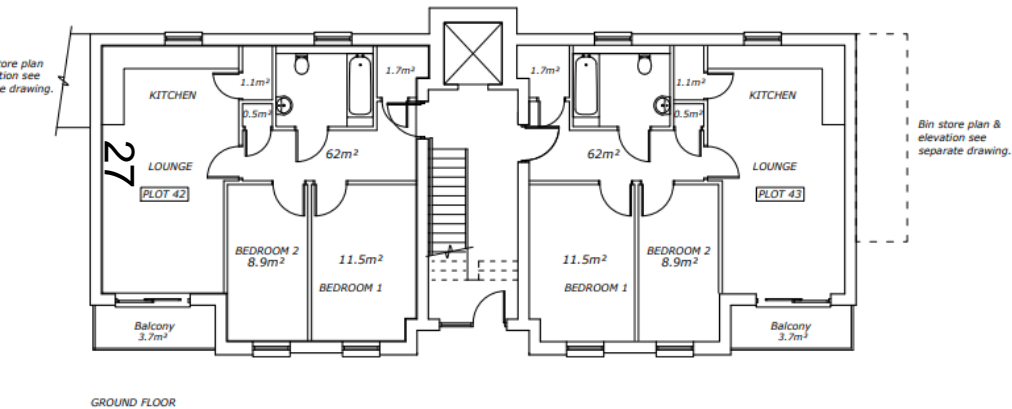


North



West

Block A Floor Plan



Block B Front Rear and Side



OXFORD
CITY
COUNCIL



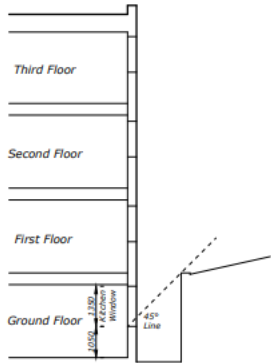
East / North

Cycle store plan
& elevation see
separate drawing.

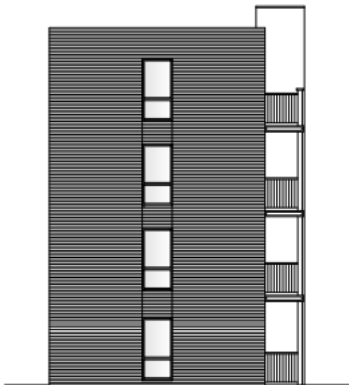
28



West



Section

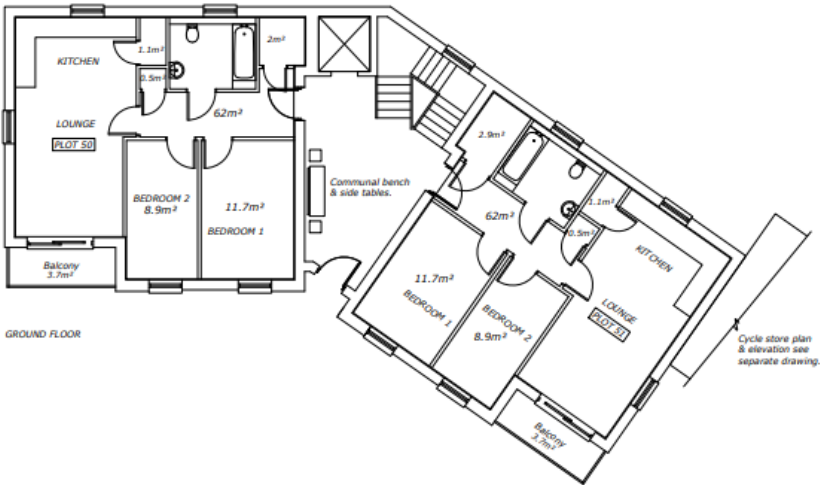


South



Block B Floorplan

29

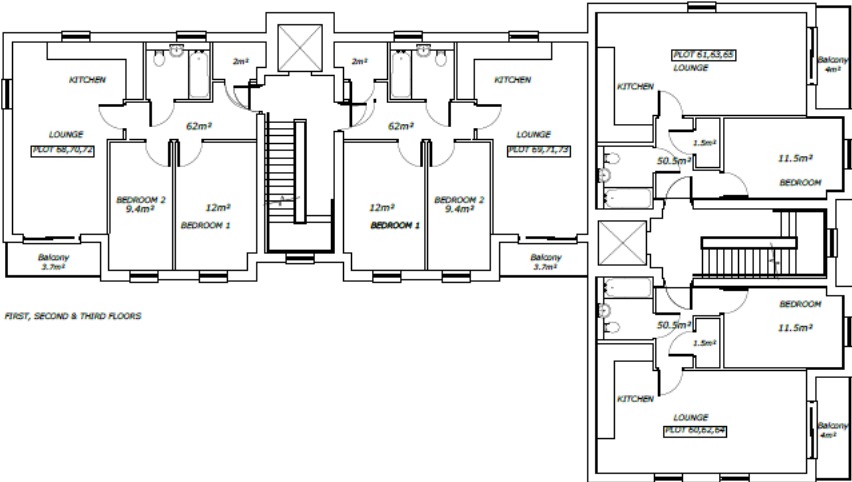
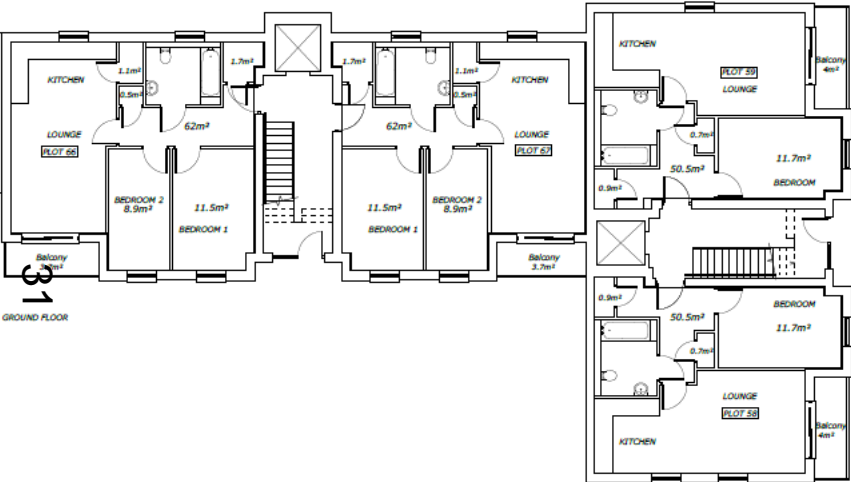


Block C Front side and rear



Block C Floorplan

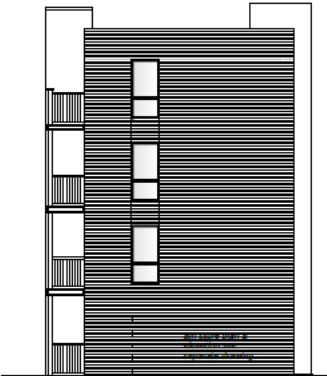
w.oxford.gov.uk



Block D Front rear and side

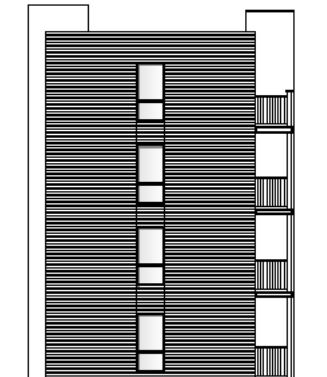
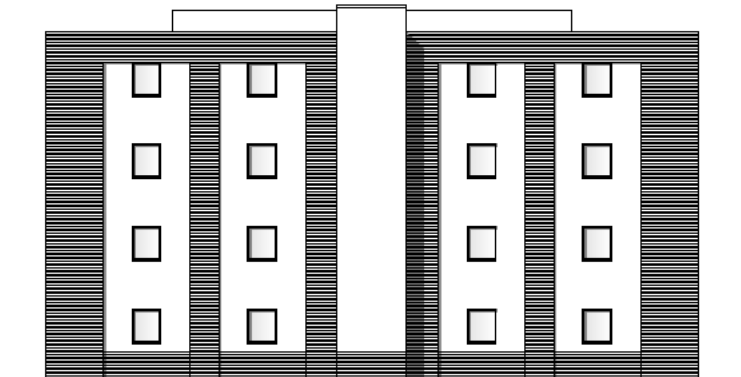


South



West

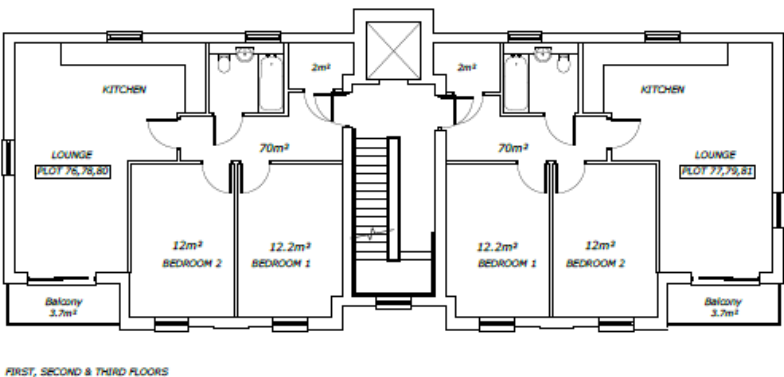
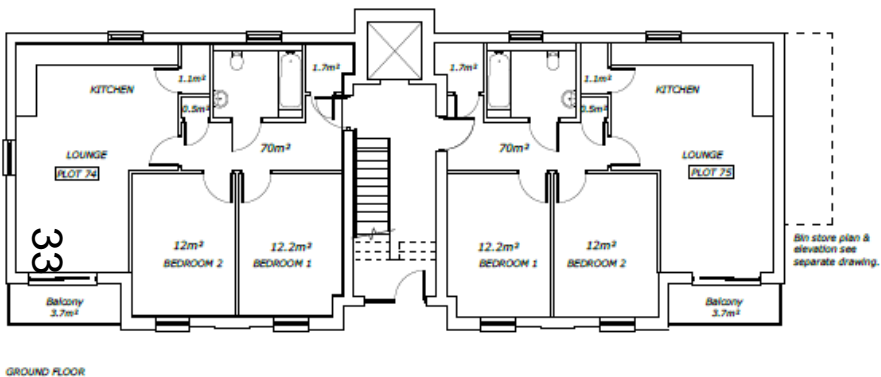
32



www.oxford.gov.uk

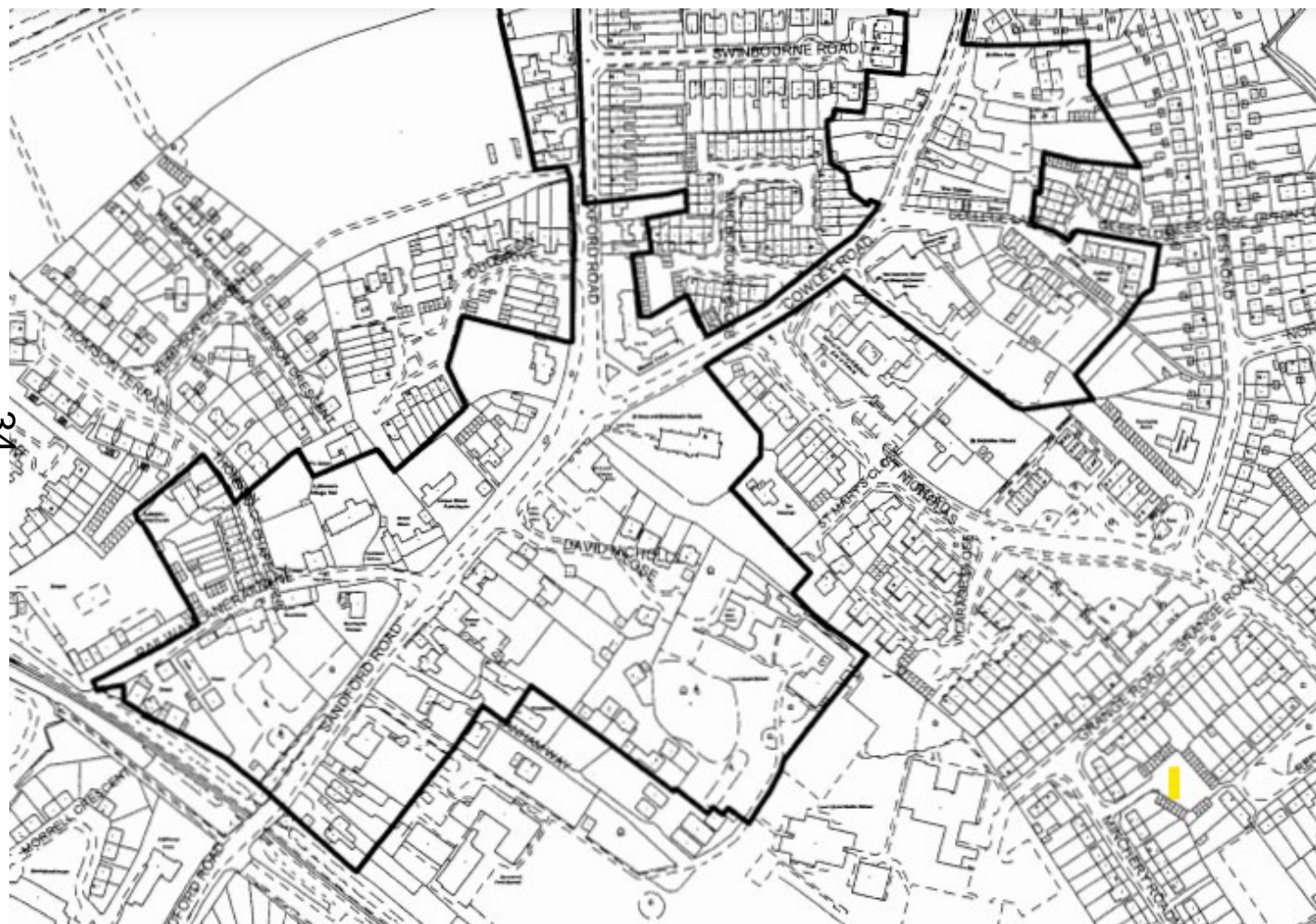


Block D Floor Plan



Littlemore Conservation Area

www.oxford.gov.uk



Refused 2004 application

oxford.gov.uk



OXFORD
CITY
COUNCIL



35

Prior to clearance







Oxford City Planning Committee Presentation

www.oxford.gov.uk



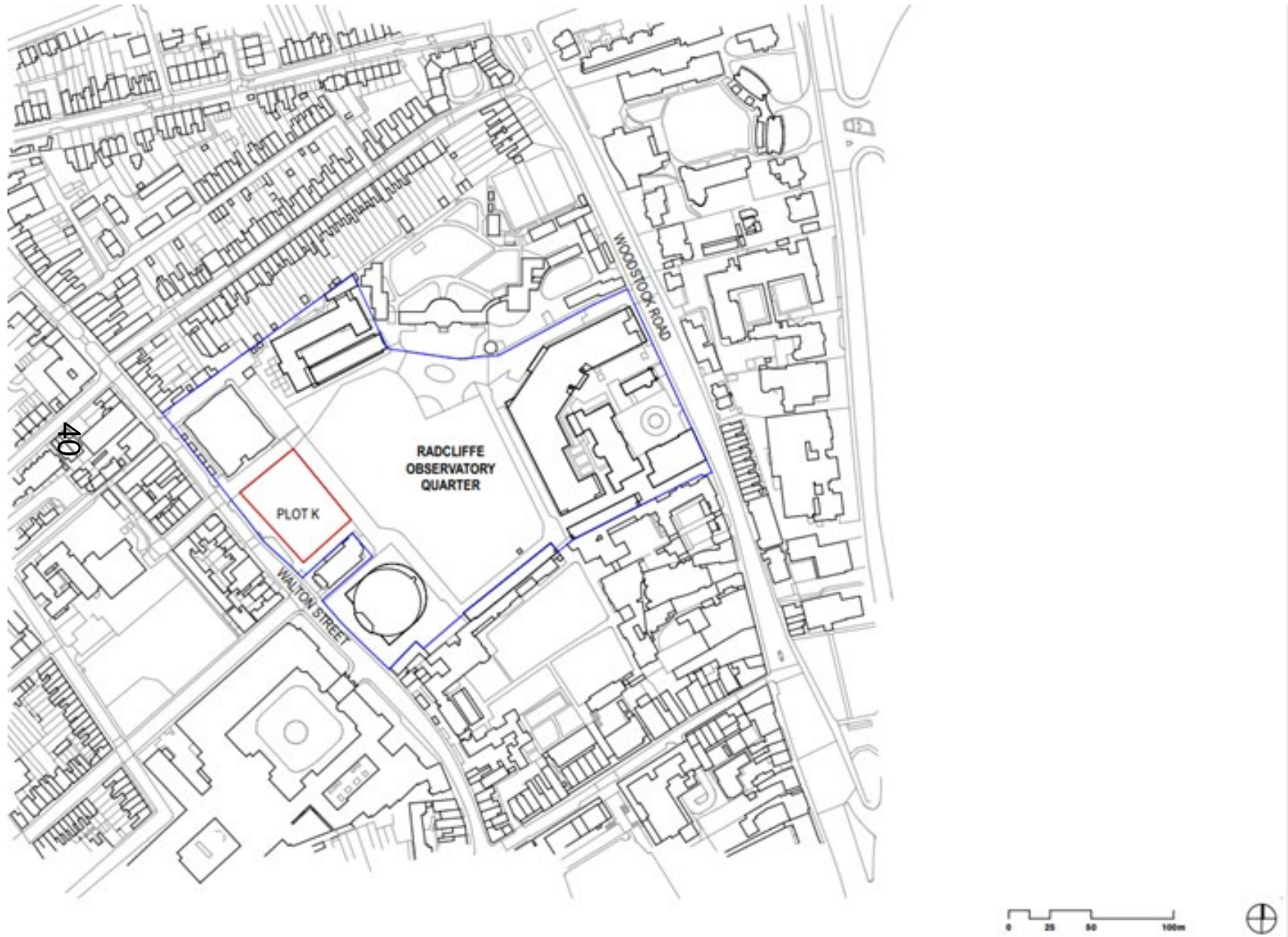
22/01215/FUL

39 Anna Watts Building, Woodstock Road

19th July 2022



Site Location Plan







Oxford City Planning Committee Presentation

www.oxford.gov.uk



21/03582/FUL

43

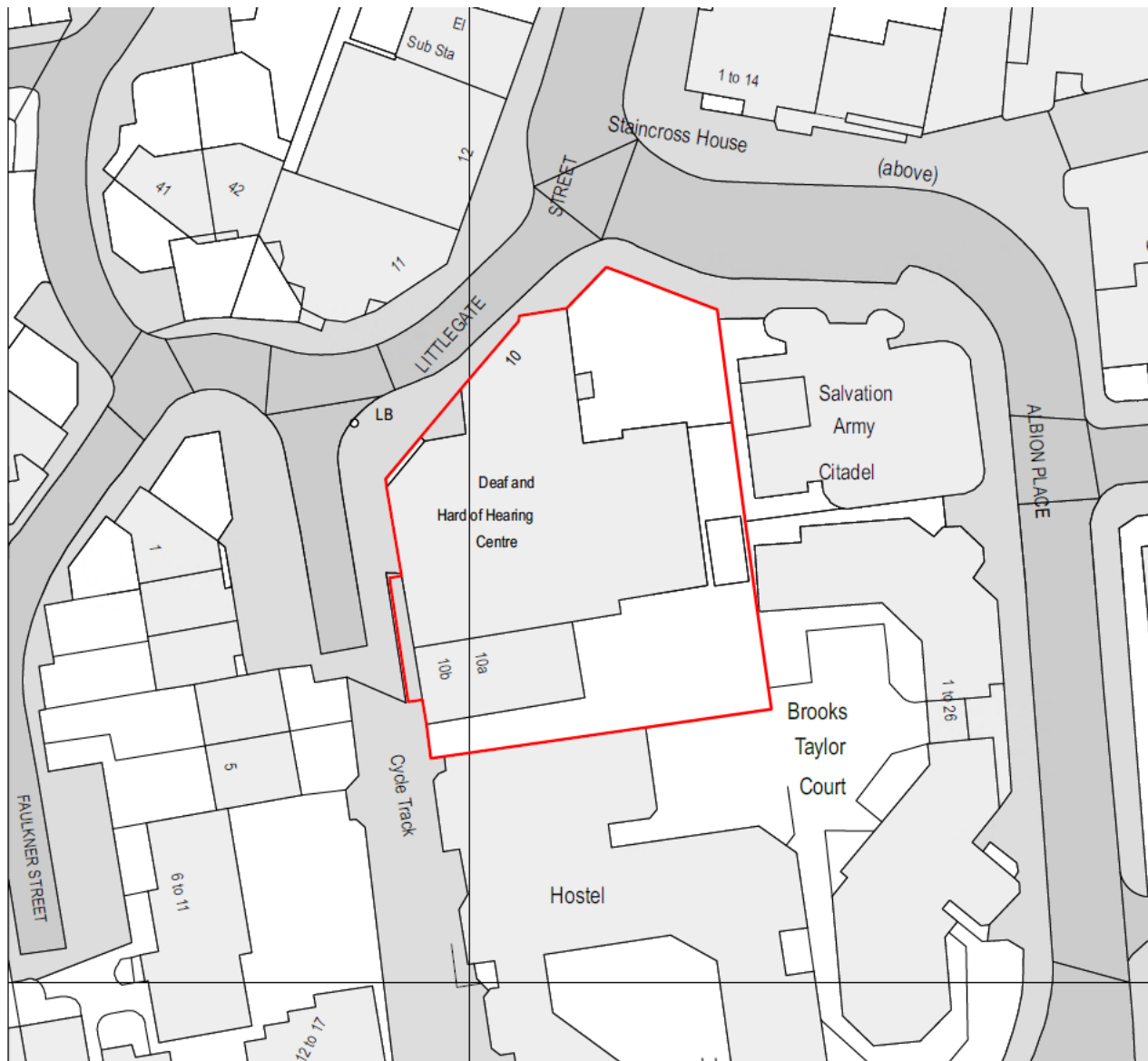
**Deaf and Hard of Hearing Centre, 10
Littlegate Street**

19th July 2022



Site Location Plan

www.oxford.gov.uk



Existing site



www.oxford.gov.uk



View down Faulkner Street from the south

www.oxford.gov.uk



**OXFORD
CITY
COUNCIL**



46



View of the chapel and rear of the cottage



www.oxford.gov.uk



Elements of the current site



View 1 - 10 Littlegate Street (A), 17th century Grade-II listed Cottage



View 2 - Grade-II listed Cottage 1647 (A) with School Room 1884 (D)



View 3 - Grade-II listed Cottage 1647 (A) with former non-listed Baptist Chapel 1832 (C)



View 4 - Infill kitchen extension late 19th century (B), and dormer extension to cottage (A)

2.2 Site Context - continued



View position location plan (not to scale)



View 5 - former non-listed Baptist Chapel 1832 (C) with infill kitchen extension late 19th century (B)



View 6 - 10a & 10b Littlegate Street 1832 and 20th century (E) with former Baptist Chapel 1832 (C)



View 7 - 10a & 10b Littlegate Street 1832 and 20th century (E) with School Room 1884 (D)

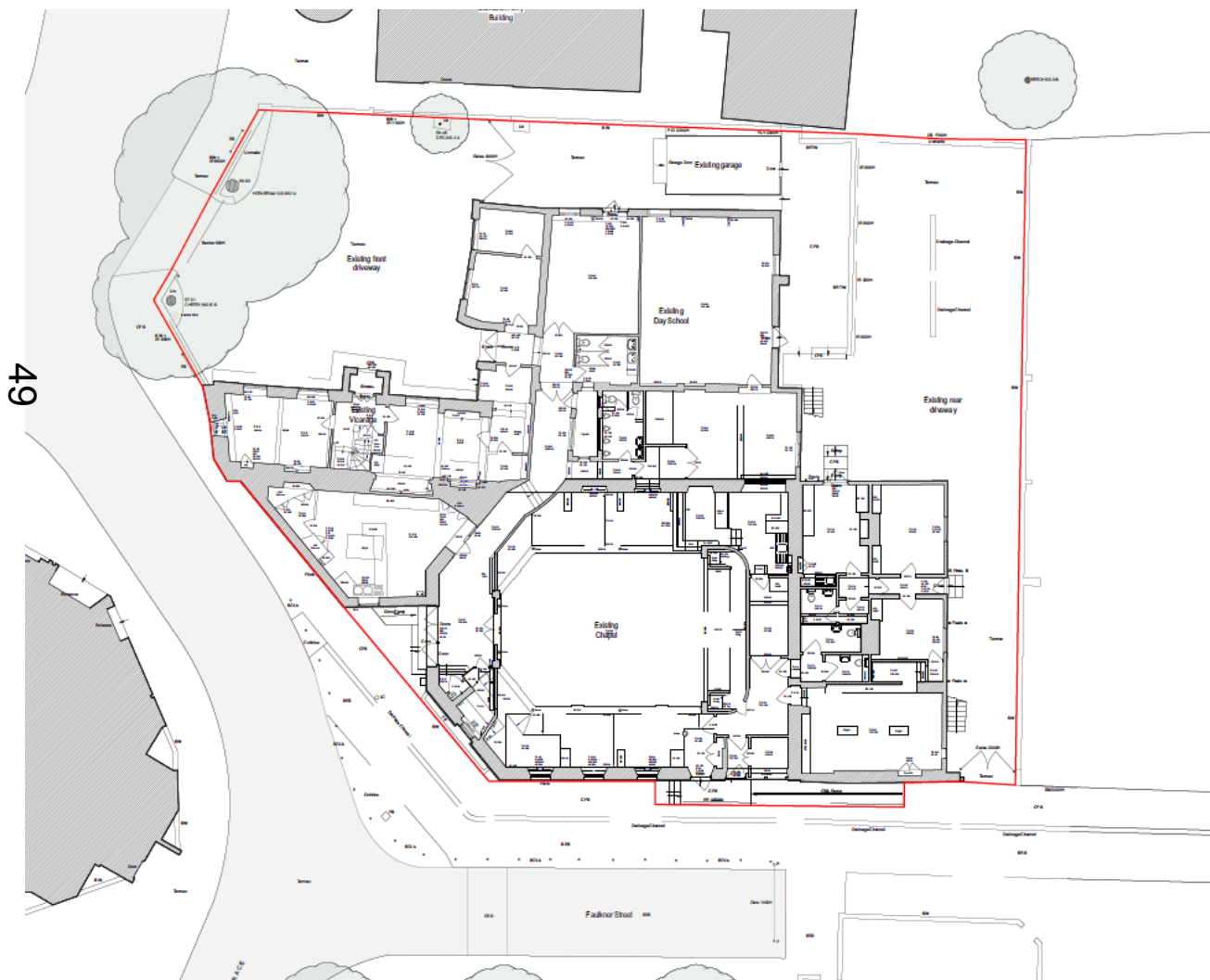


View 8 - Garage (F)

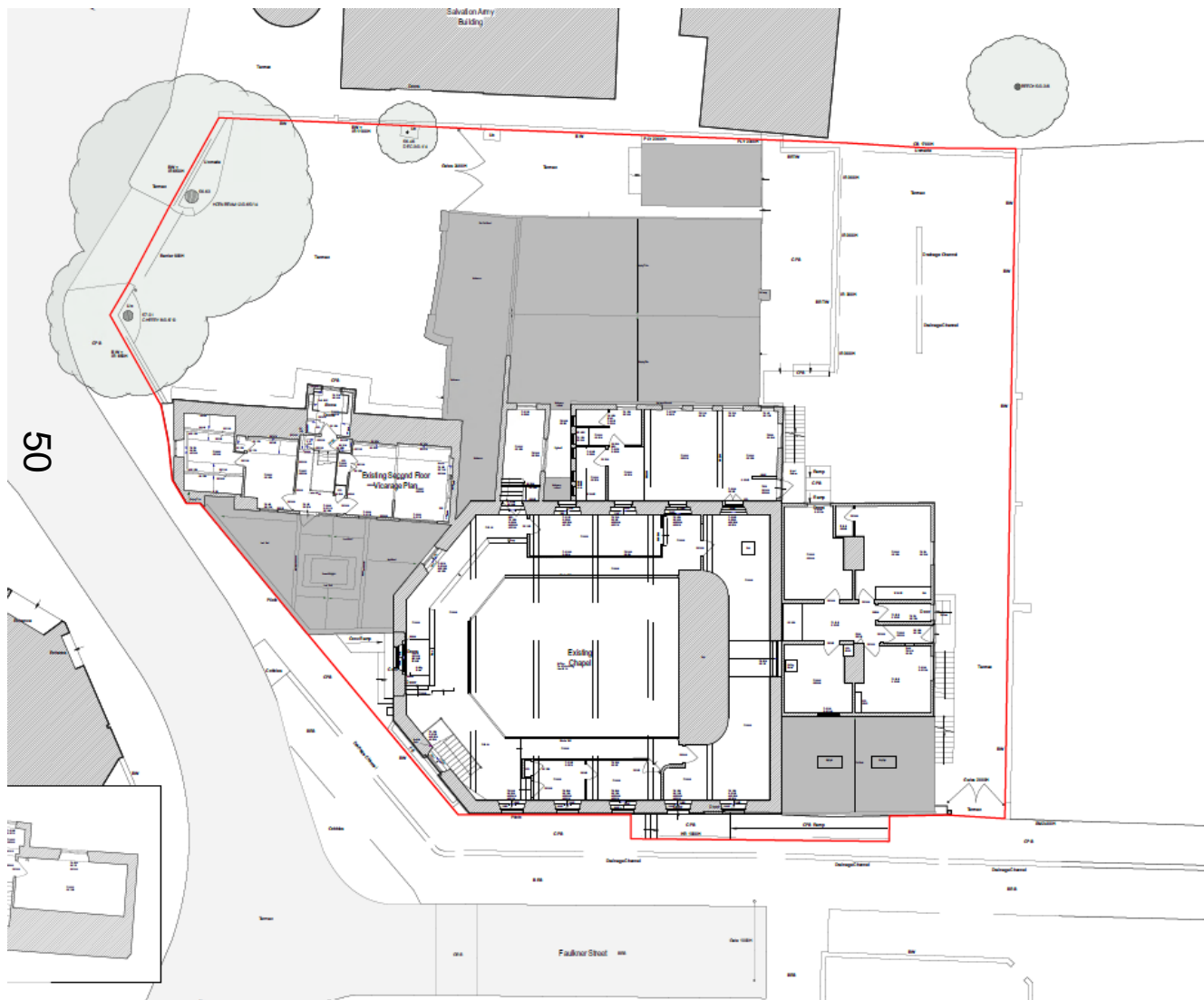


Existing Ground Floor/Site Plan

www.oxford.gov.uk



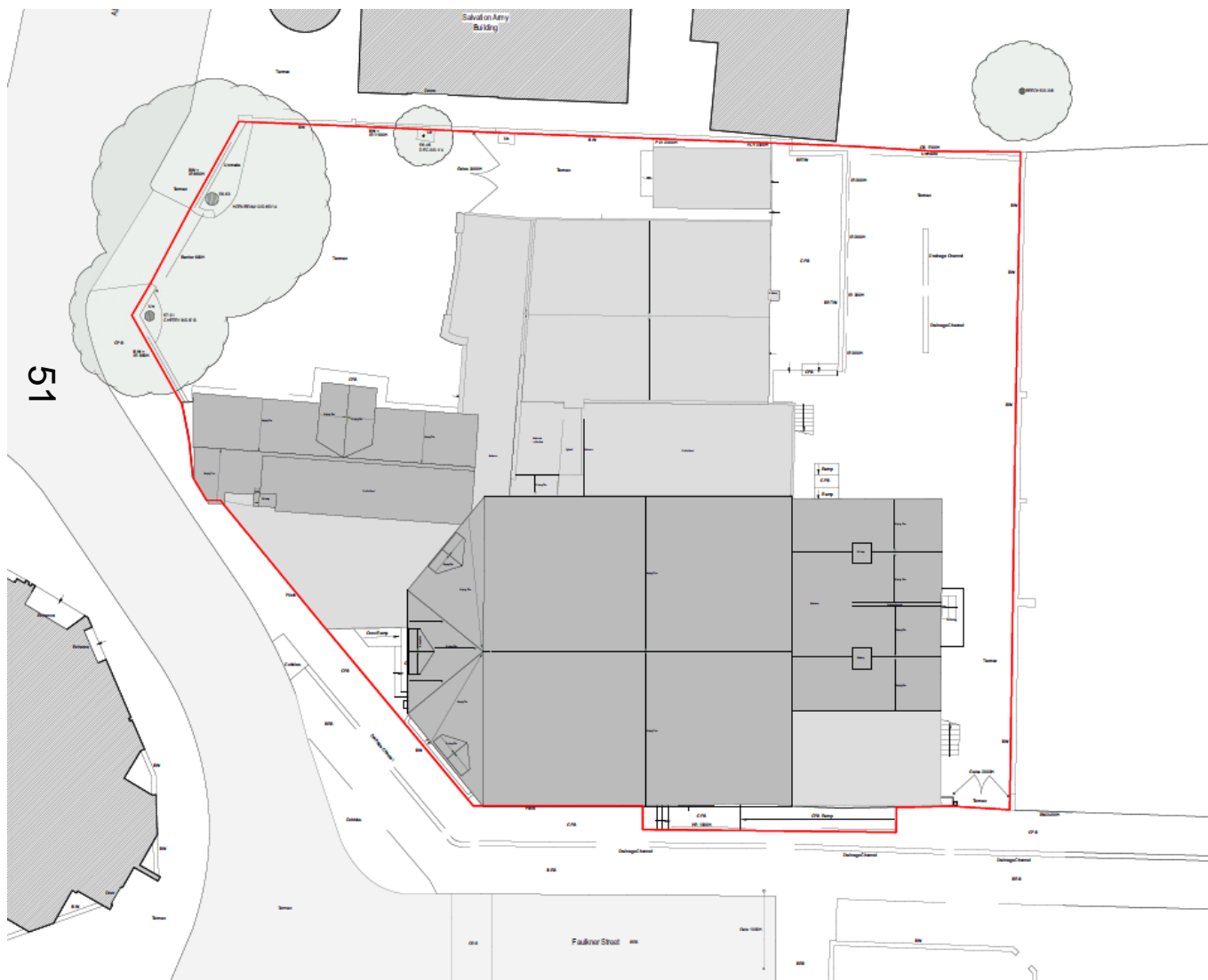
Existing First Floor Plan



www.oxford.gov.uk



Existing Roof Plan



www.oxford.gov.uk



[illegible]

53



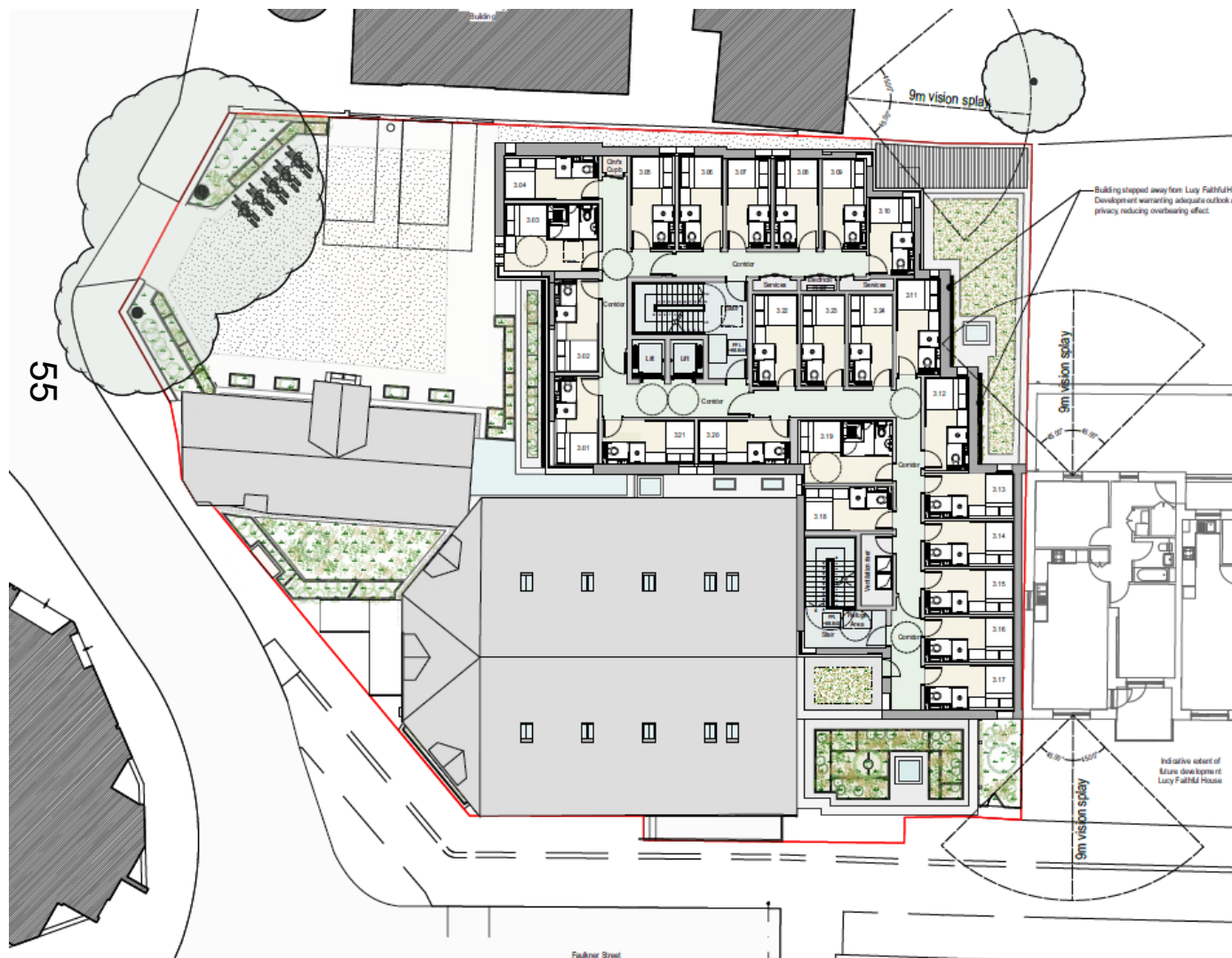
Proposed second floor plan



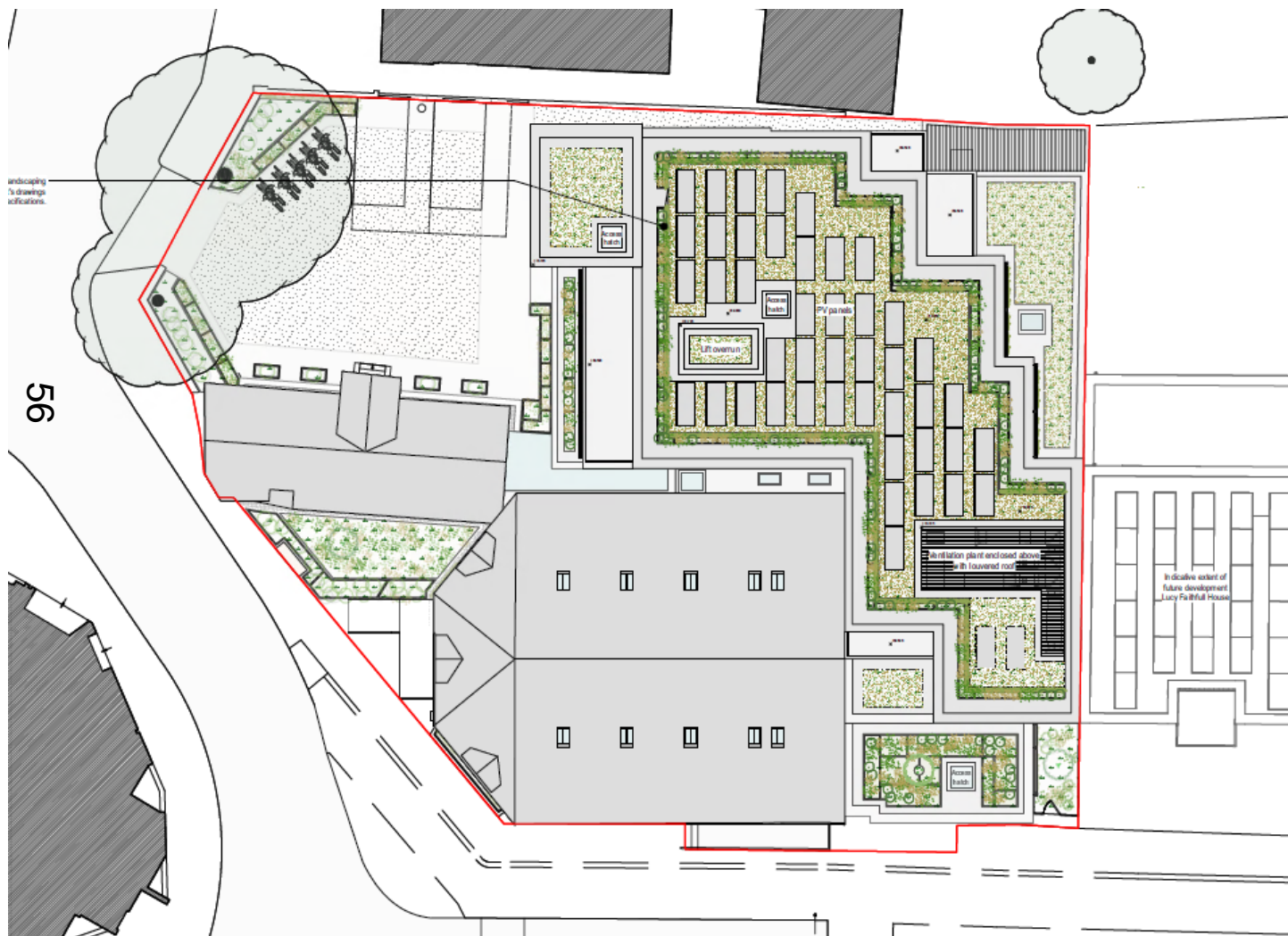
www.oxford.gov.uk



Proposed third floor plan

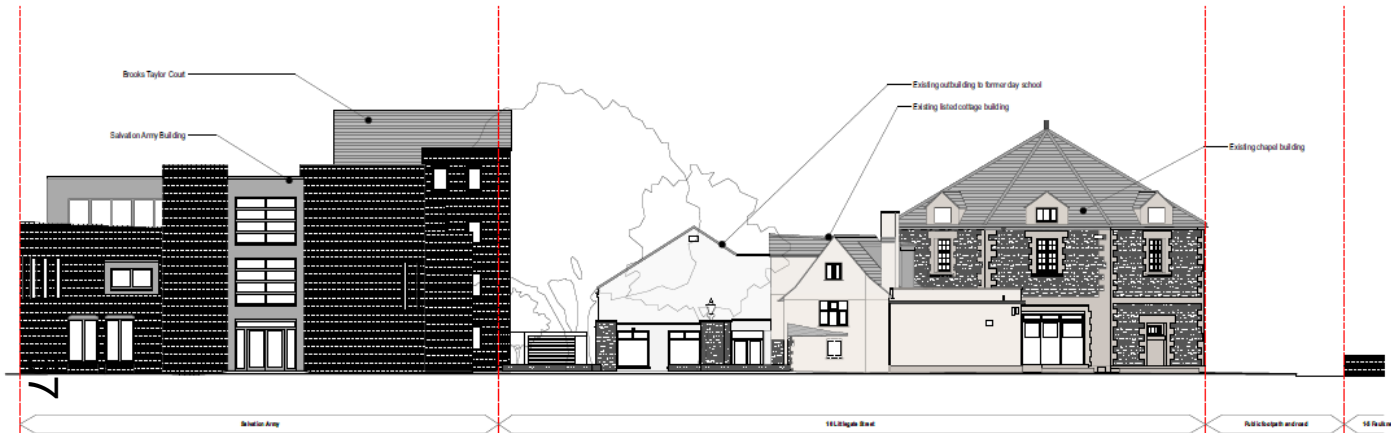


Proposed roof plan



Existing north and west elevations

www.oxford.gov.uk



01 - Existing North Elevation
1:1000 scale

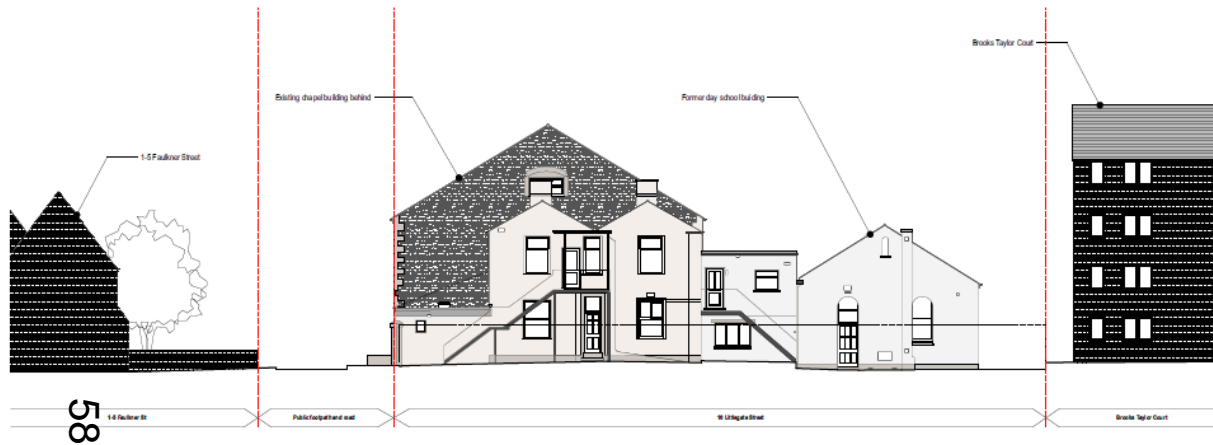


02 - Existing West Elevation
1:1000 scale



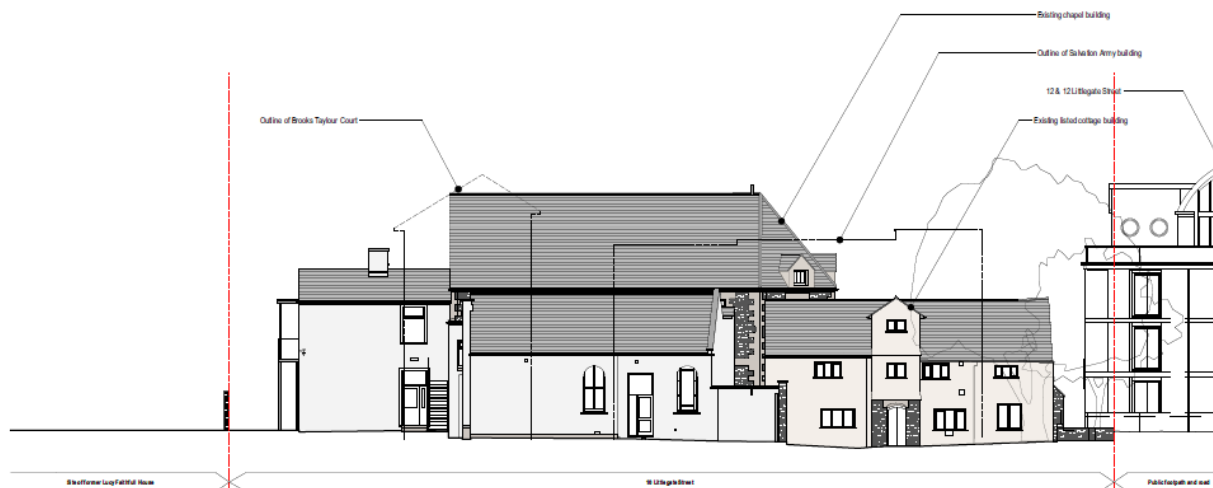
Existing south and east elevations

www.oxford.gov.uk



01 - Existing South Elevation

10m 0 10 20 30 40 50 60 70 80 90 100

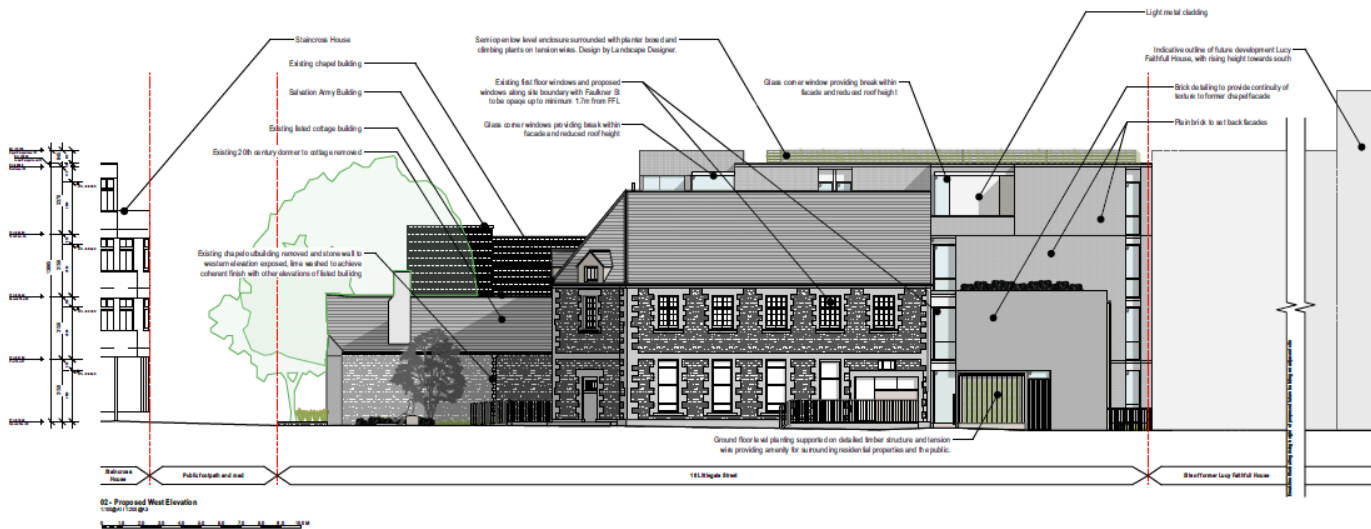
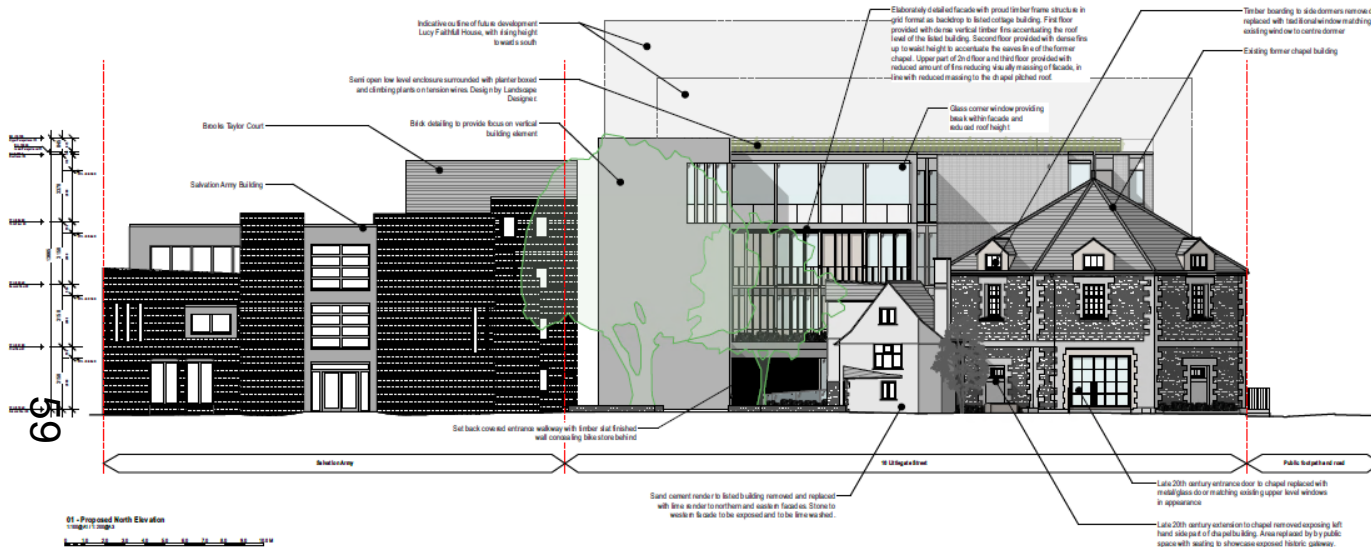


01 - Existing East Elevation

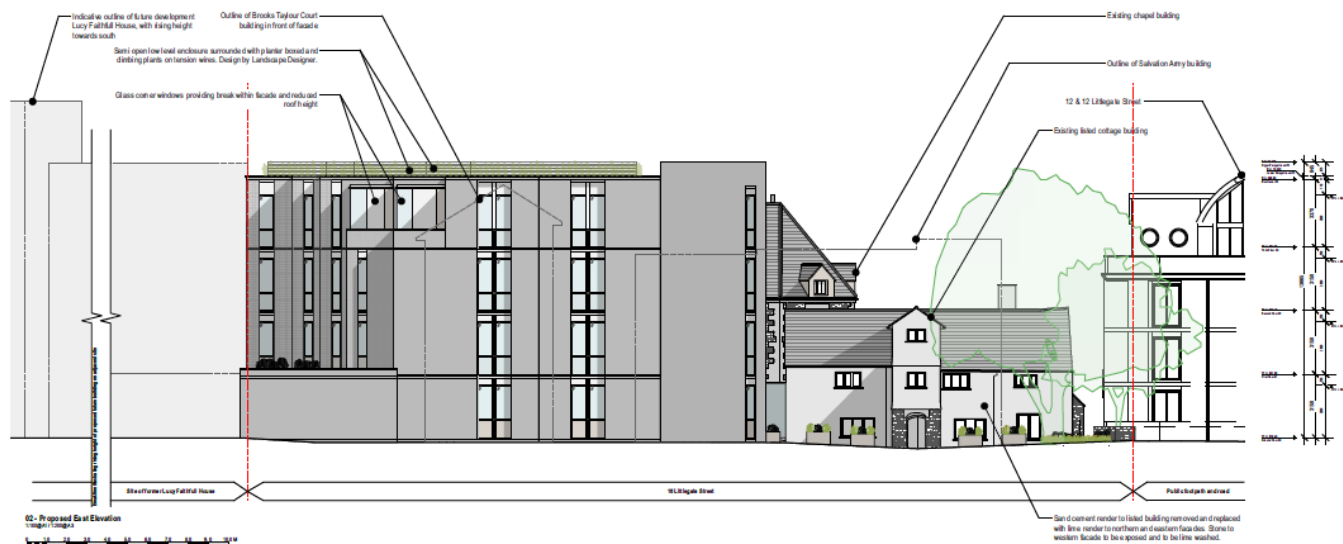
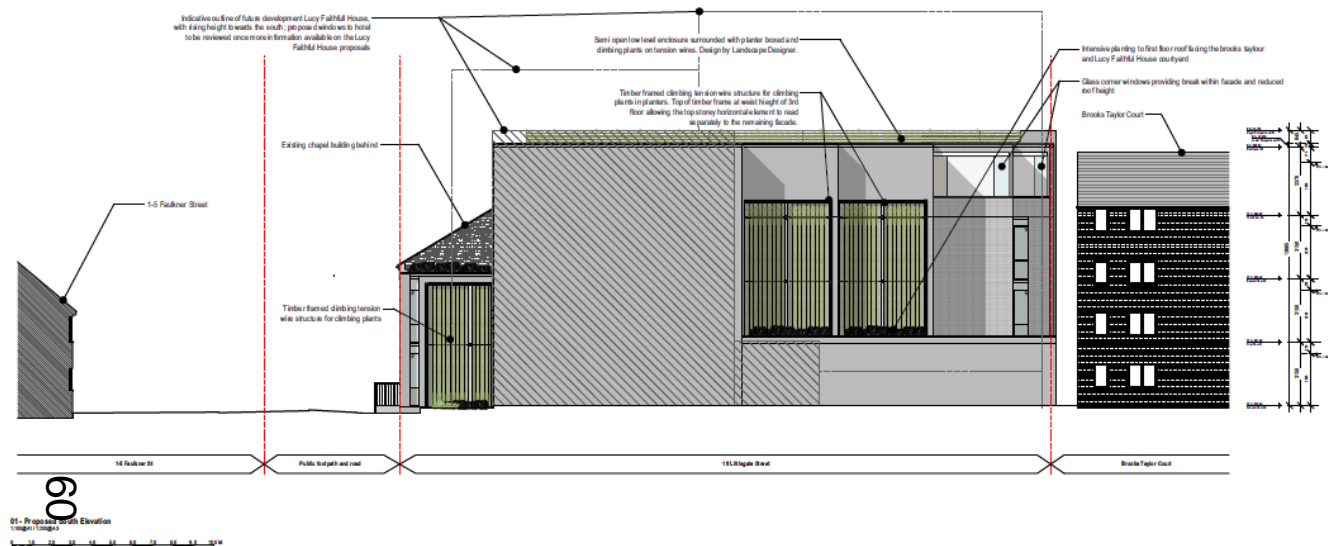
10m 0 10 20 30 40 50 60 70 80 90 100



Proposed north and west elevations



Proposed south and east elevations

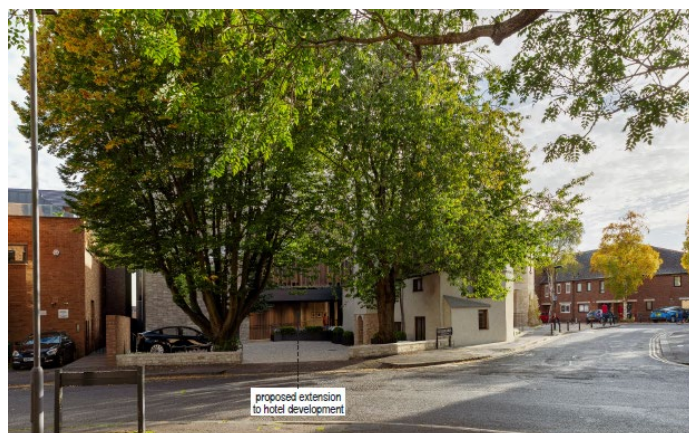


www.oxford.gov.uk



Proposed visuals

www.oxford.gov.uk



Proposed visuals

www.oxford.gov.uk



Oxford City Planning Committee Presentation

www.oxford.gov.uk

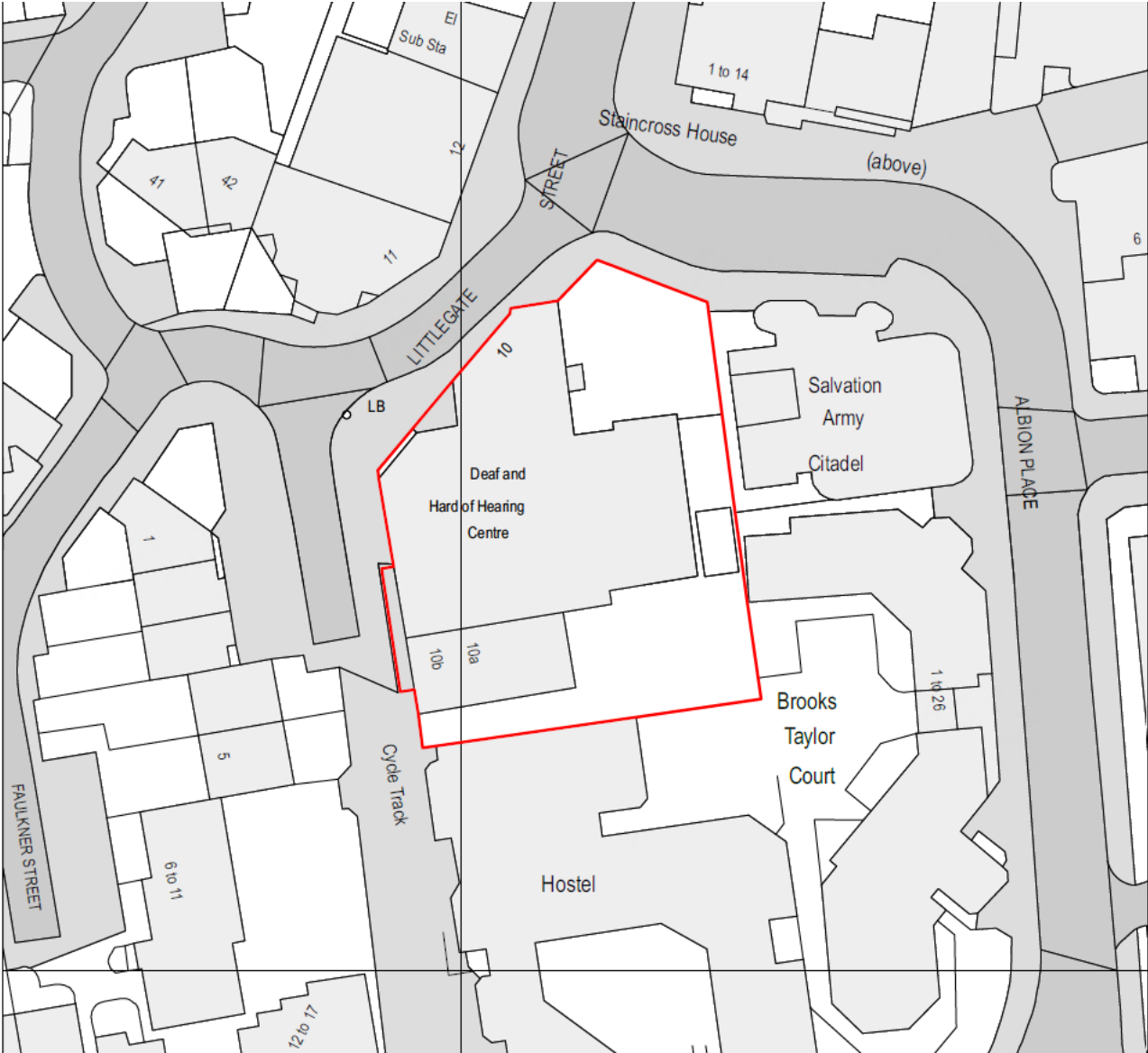


21/03583/LBC

**Deaf and Hard of Hearing Centre, 10
Littlegate Street**

19th July 2022

Site Location Plan





www.oxford.gov.uk



Existing Ground Floor Plan

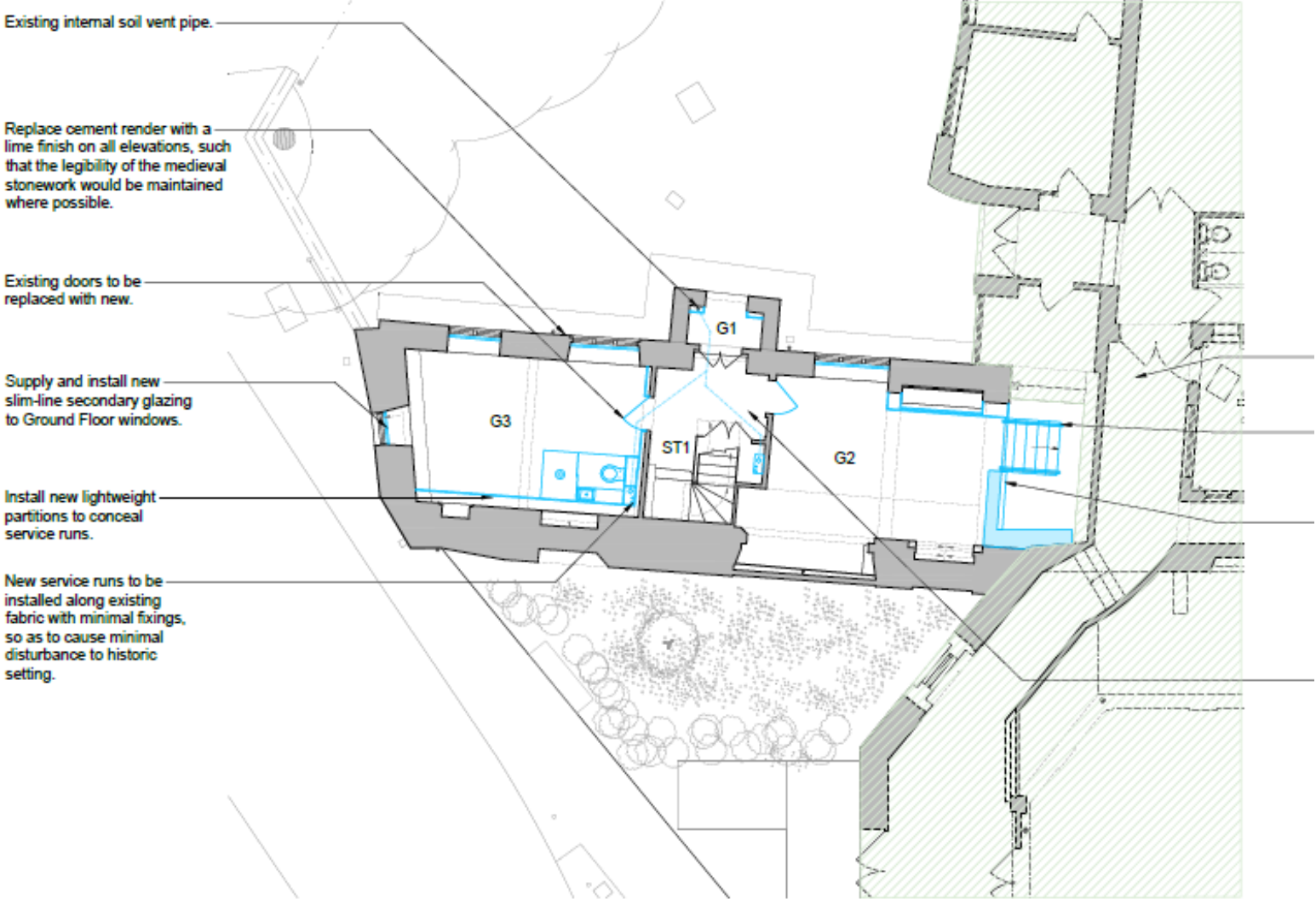
99



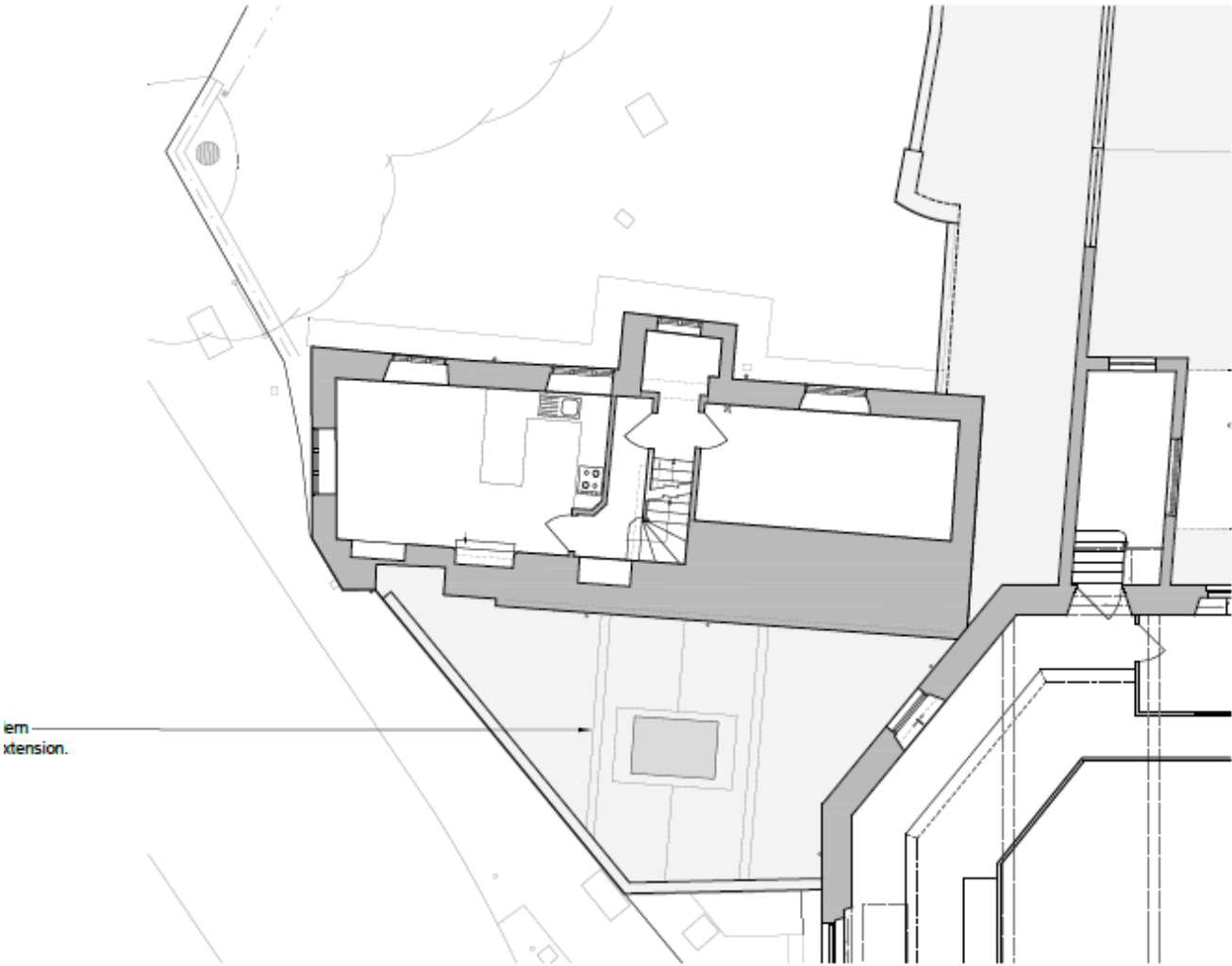
www.oxford.gov.uk



Proposed Ground Floor Plan



Existing First Floor Plan



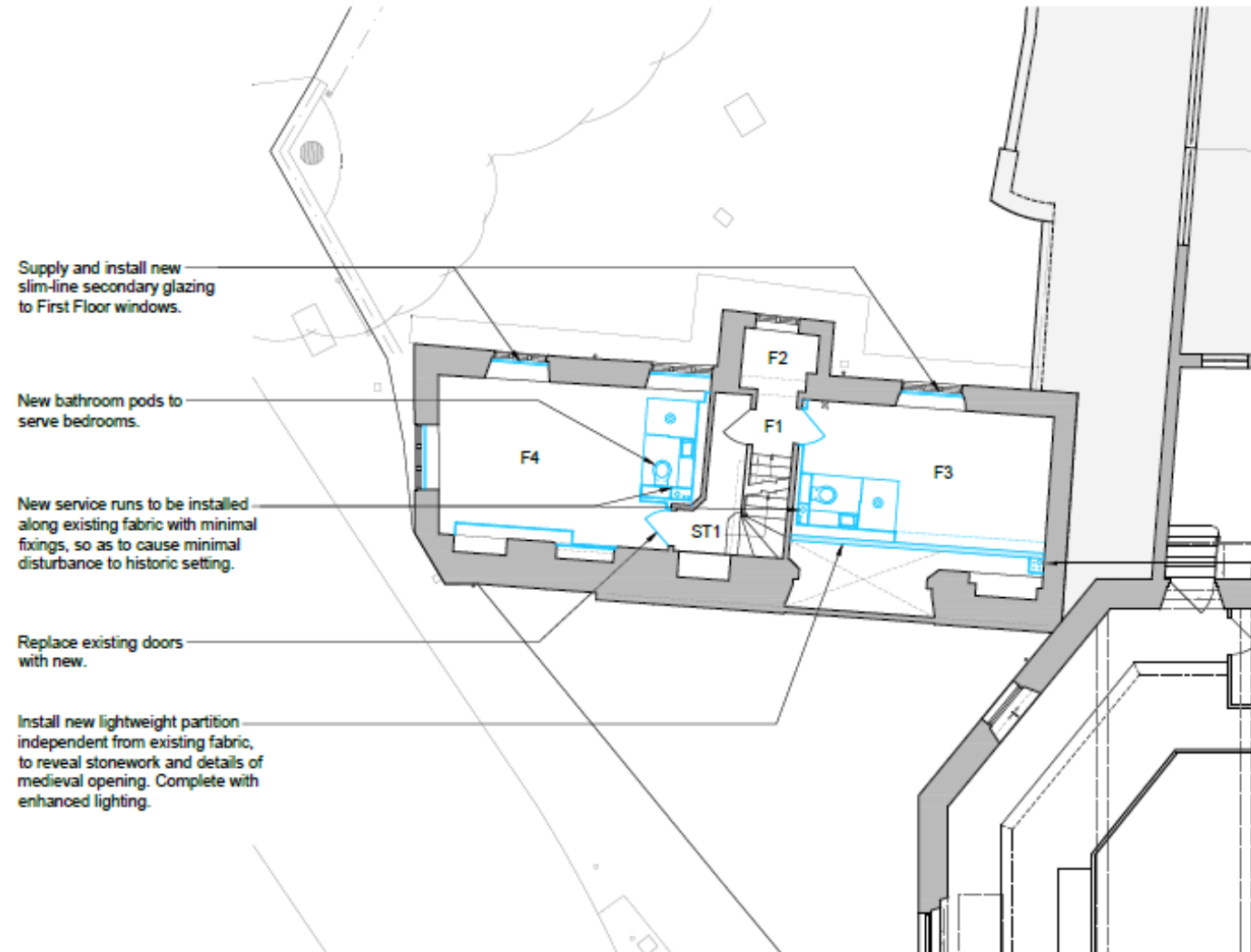
89

www.oxford.gov.uk



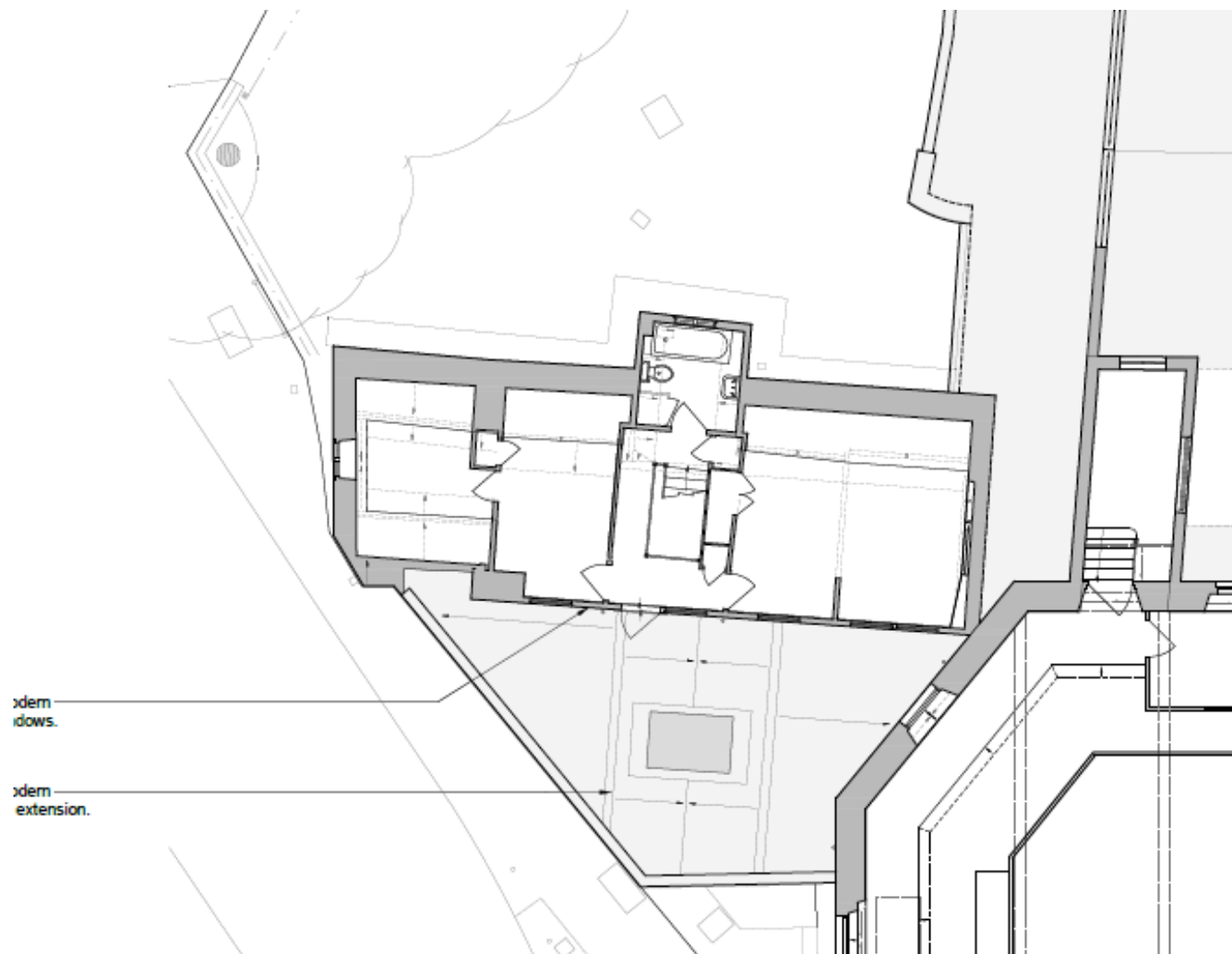
Proposed First Floor Plan

69



Existing Second Floor Plan

70

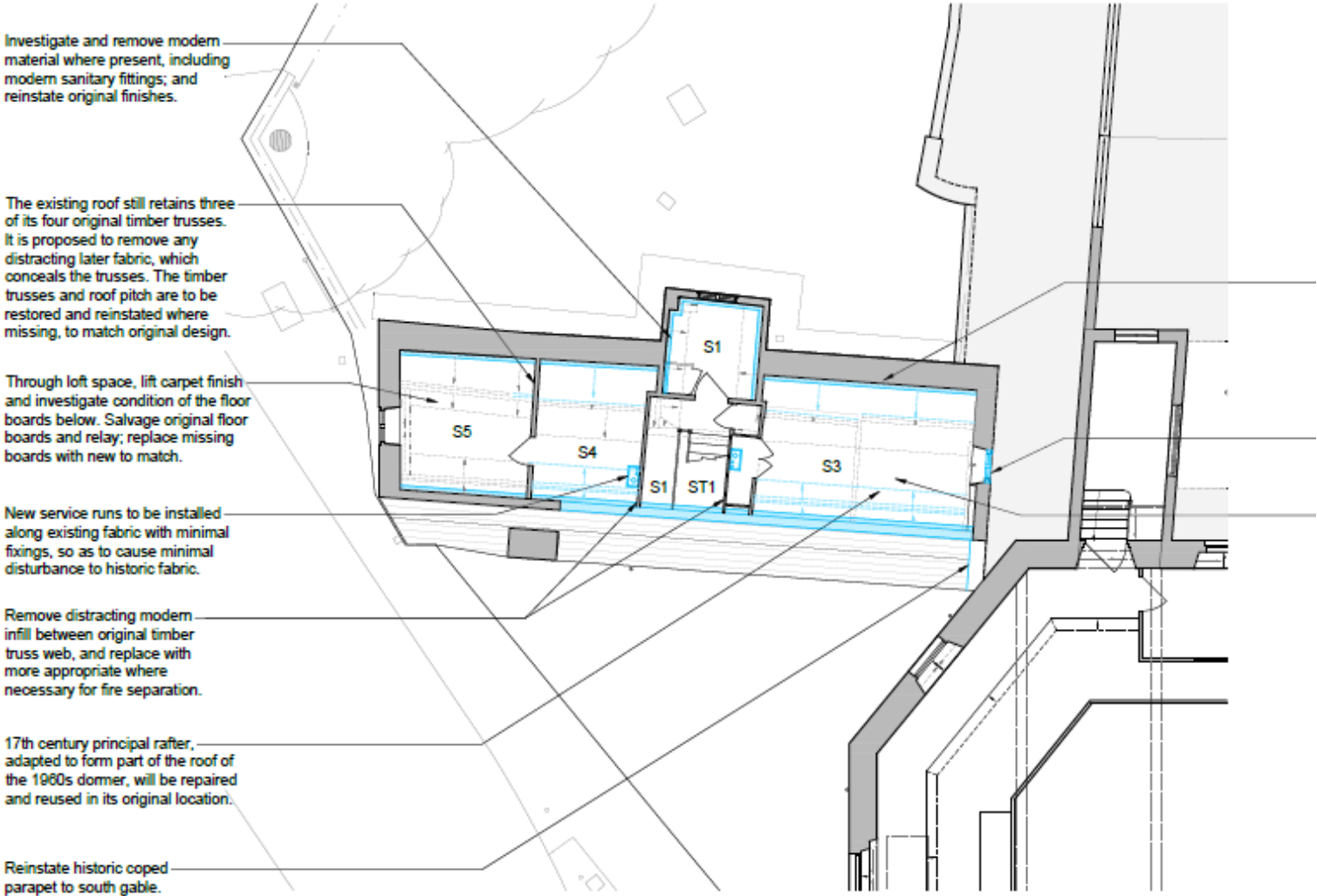


www.oxford.gov.uk

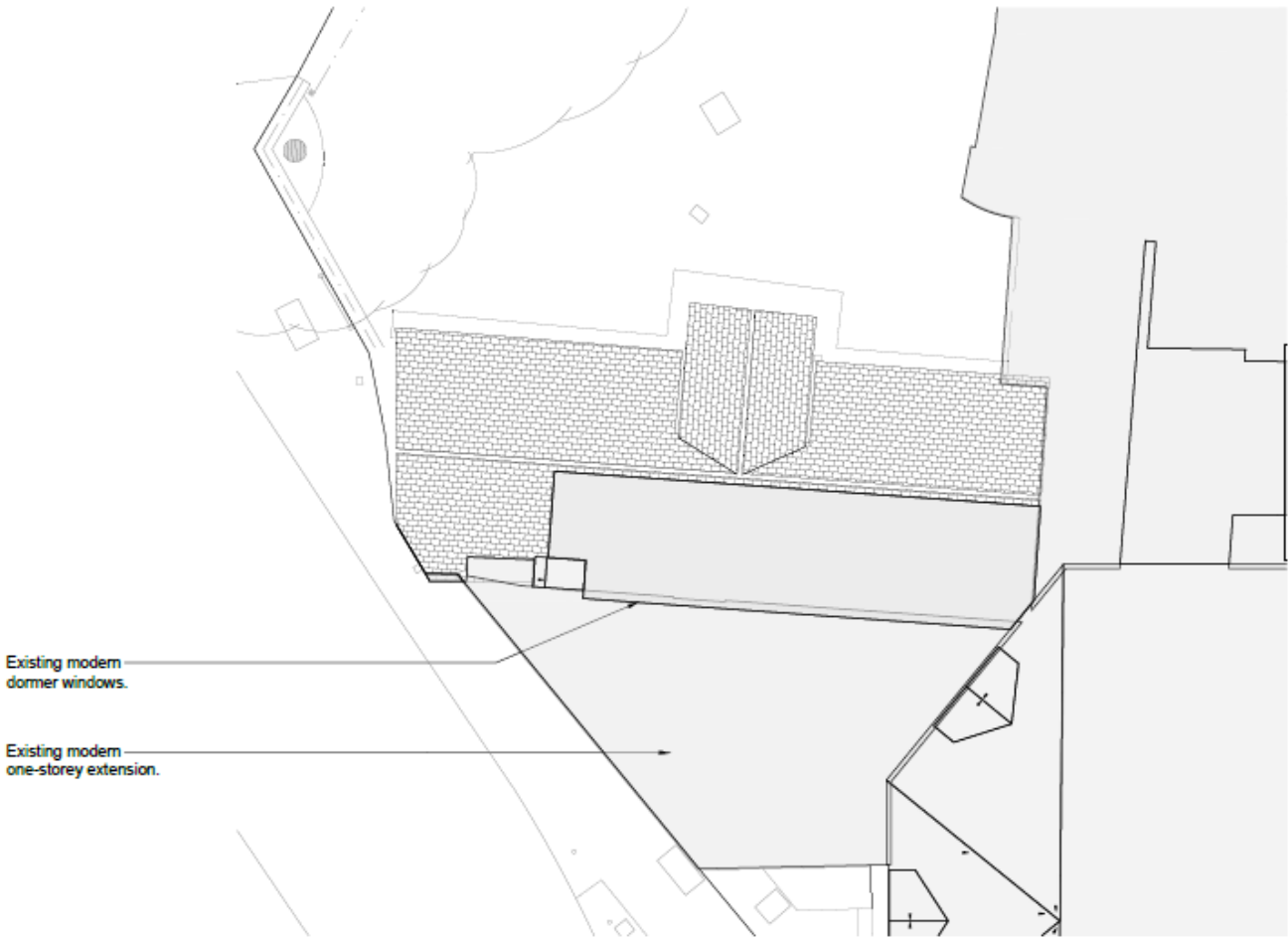


Proposed Second Floor Plan

71

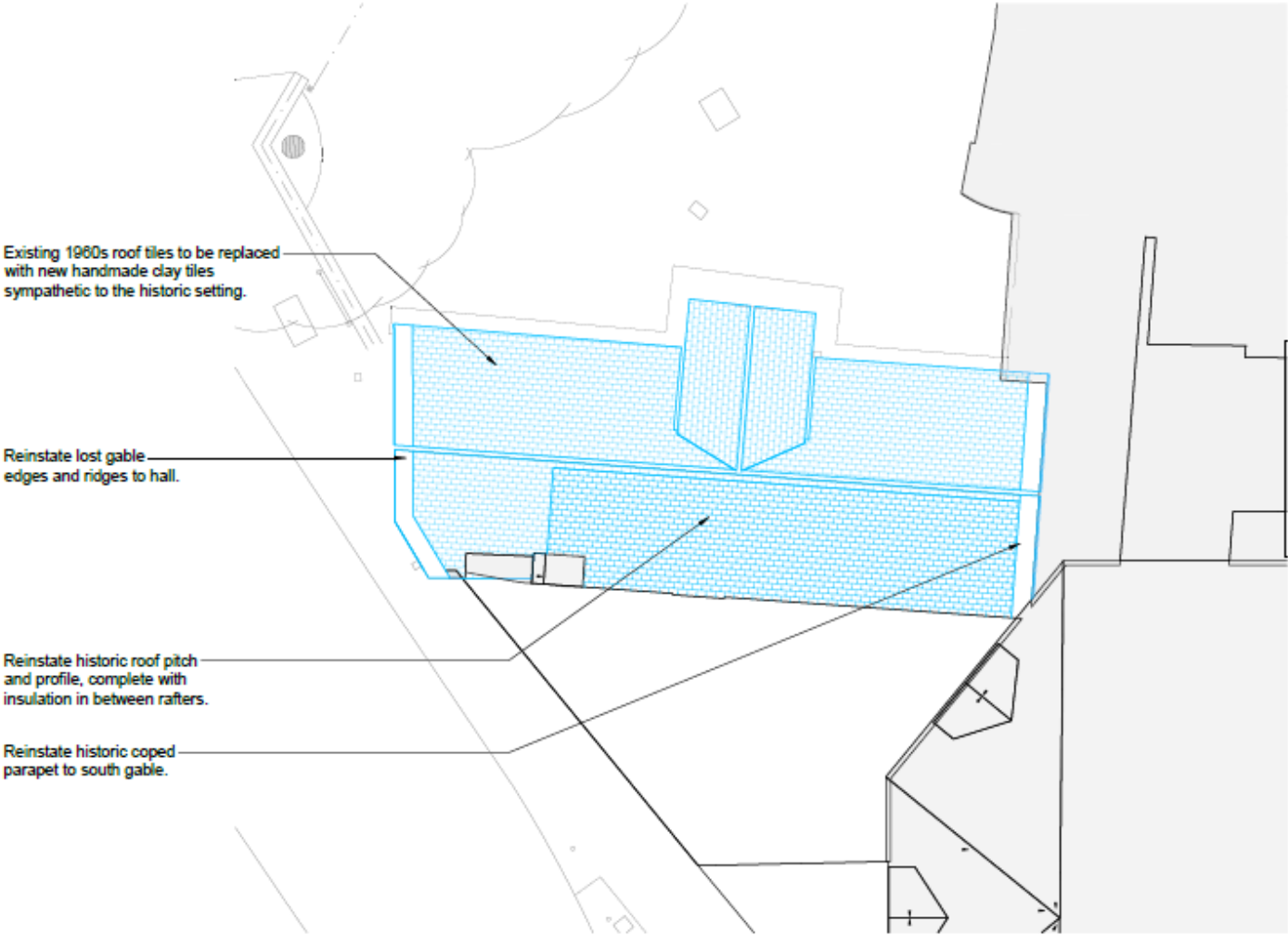


Existing Roof Plan



Proposed Roof Plan

73



Section showing existing arrangement



00 Key Plan
1203 1:200 @ A3

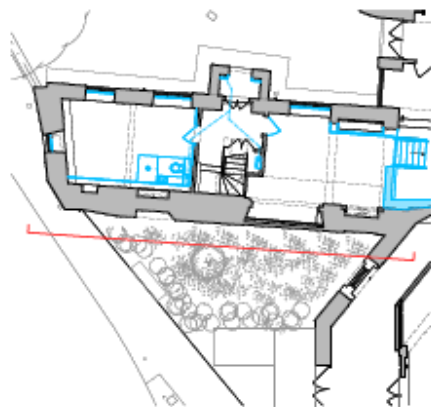


Existing modern
dormer windows.

Existing modern
one-storey extension.



Section showing revealed west facade



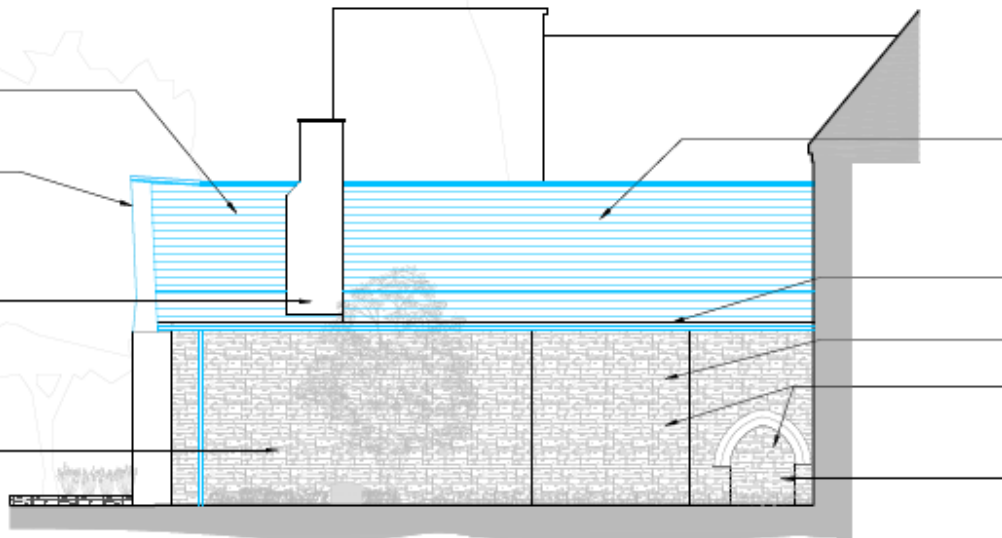
00 Key Plan
2203 1:200 @ A3

Take off 1980s roof tiles and replace with new handmade clay tiles sympathetic to the historic setting.

Reinstate lost gable edges and ridges to hall.

Remove cement render from chimney stack and restore original fabric with lime finish, as necessary. Reinstate lost coping stone to chimney slope.

Investigate condition of medieval fabric to rear wall and repair with lime finish in a sympathetic manner.



This page is intentionally left blank

Oxford City Planning Committee Presentation

www.oxford.gov.uk



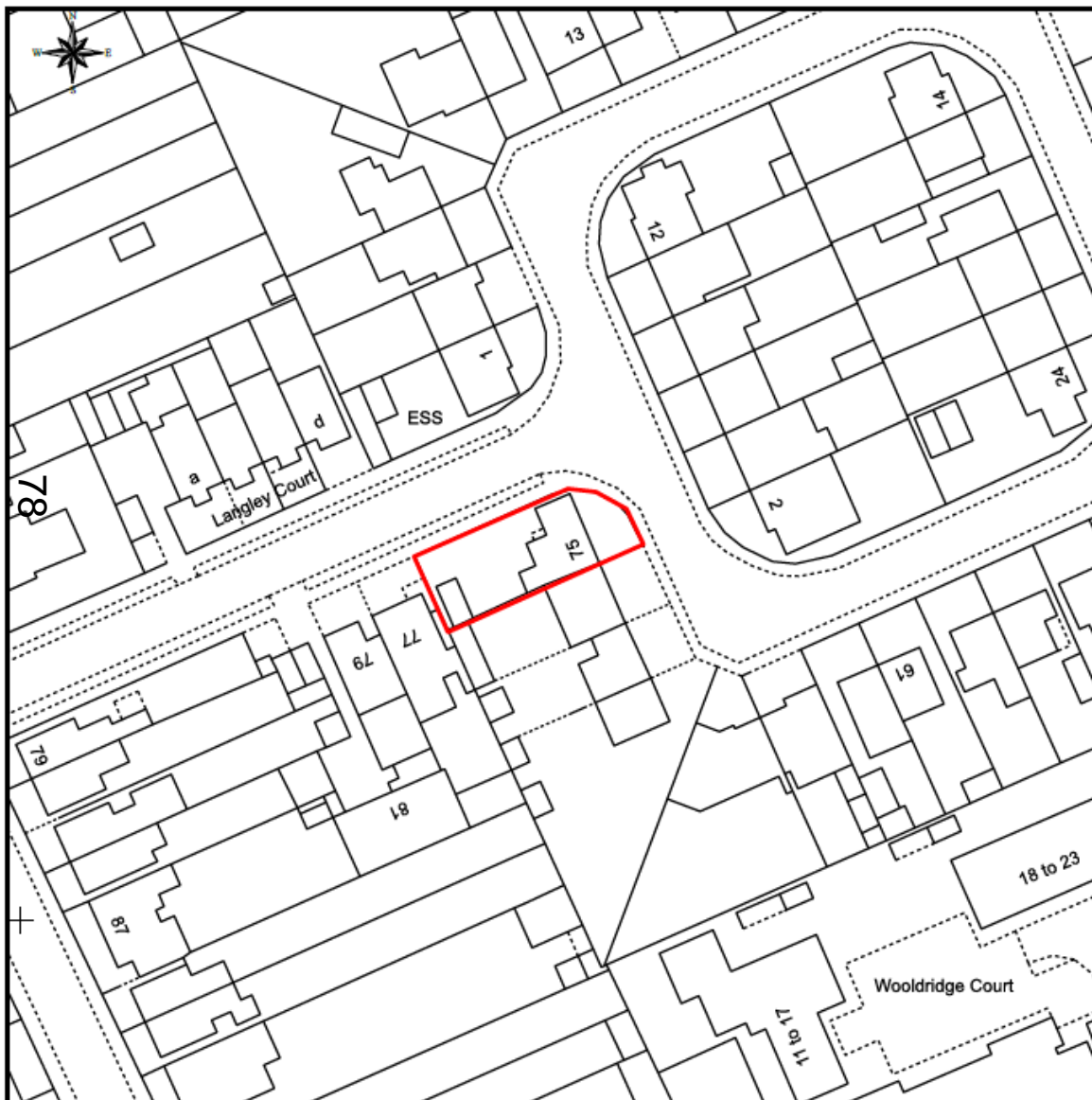
Reference Number: 22/00289/FUL

Site Address: 75 Langley Close

77



Site Location Plan



www.oxford.gov.uk





www.oxford.gov.uk



**OXFORD
CITY
COUNCIL**





80

www.oxford.gov.uk



**OXFORD
CITY
COUNCIL**







www.oxford.gov.uk





www.oxford.gov.uk

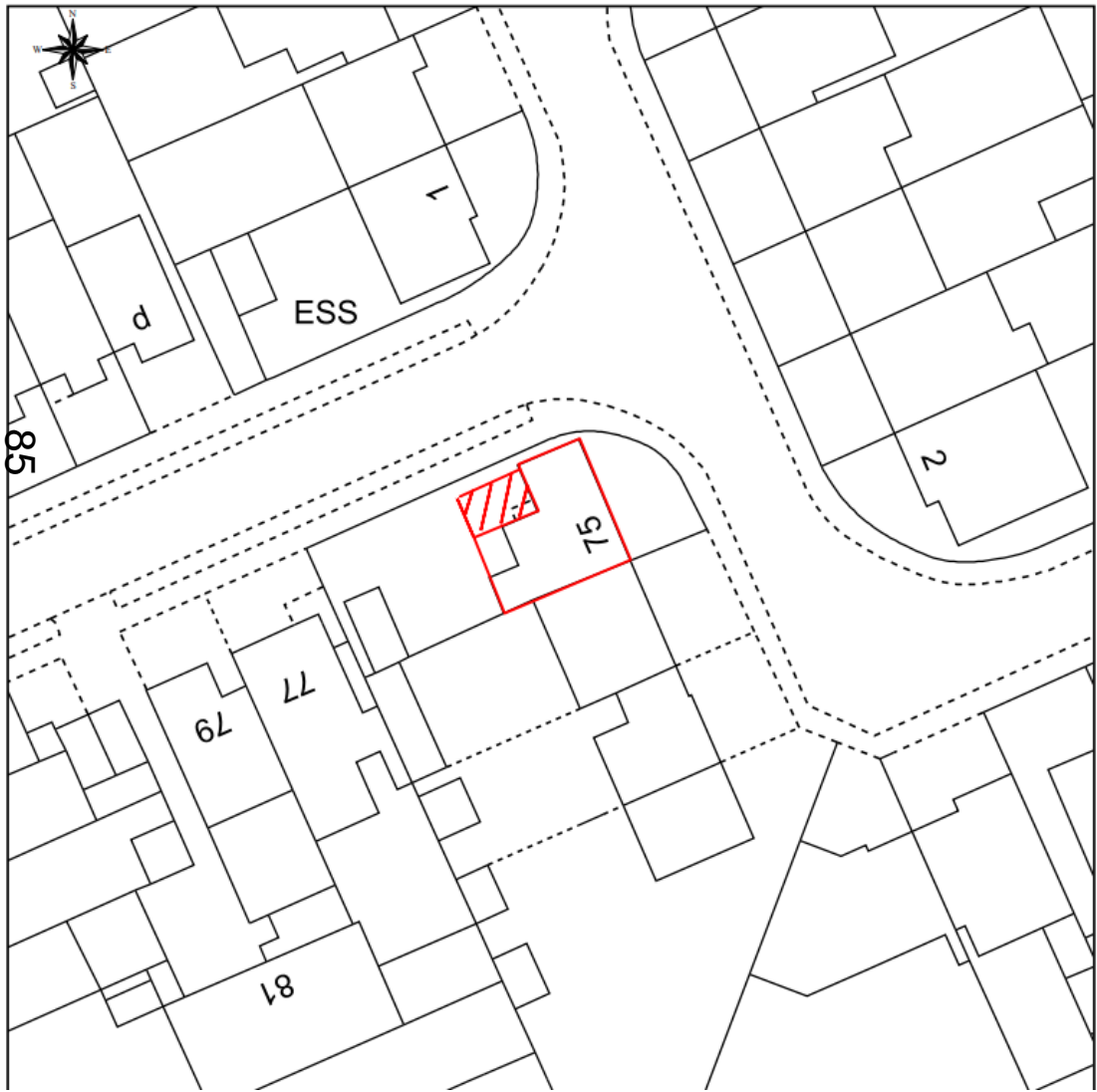




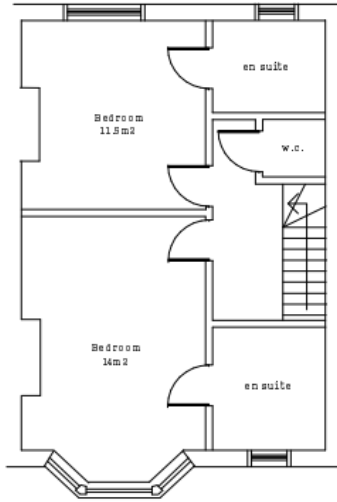
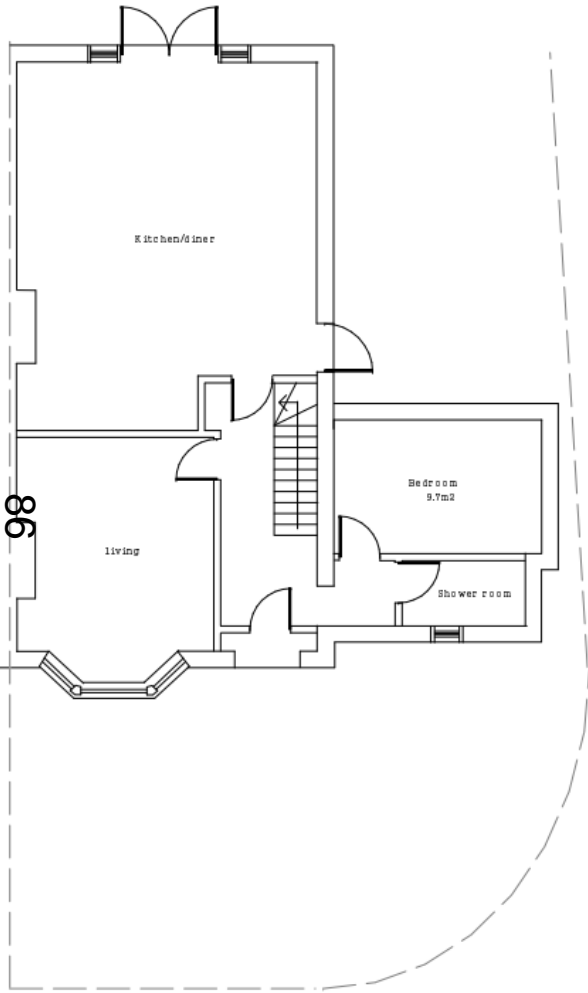
www.oxford.gov.uk



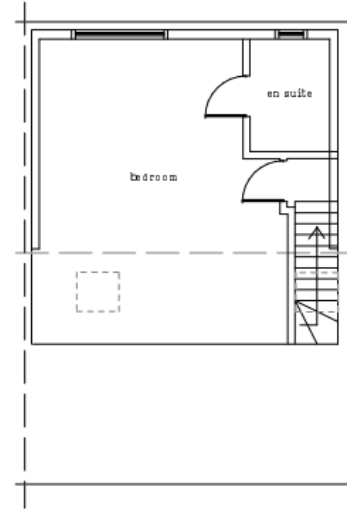
Block Plan



Existing Plans



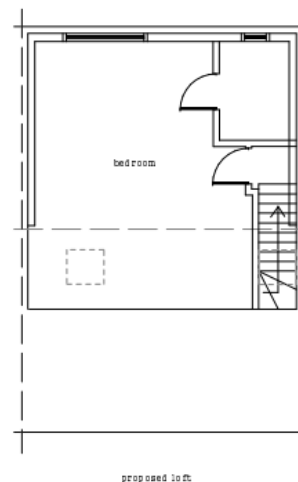
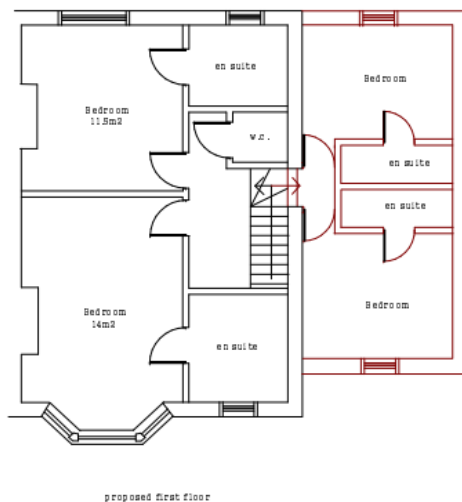
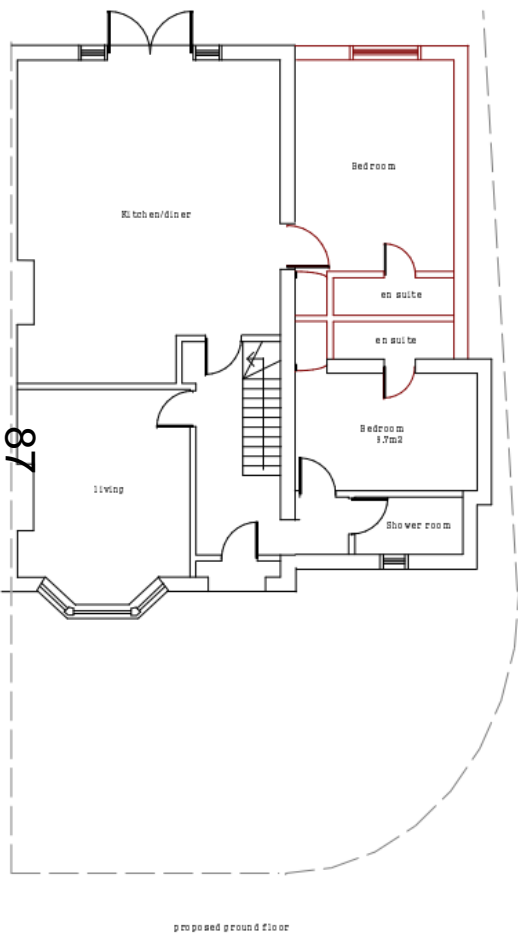
Existing 1st floor



existing 1st



Proposed Plans



www.oxford.gov.uk

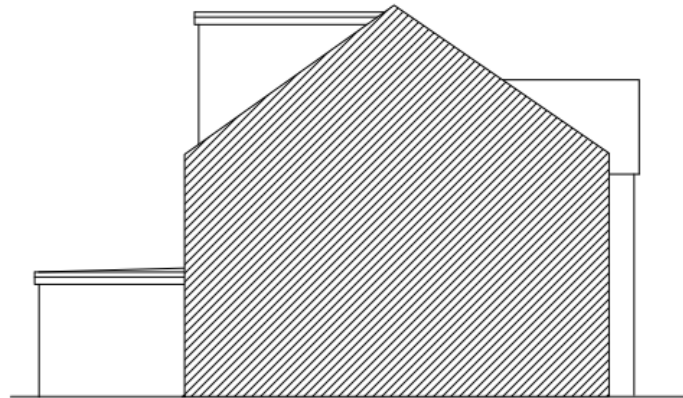


Existing Elevations

88



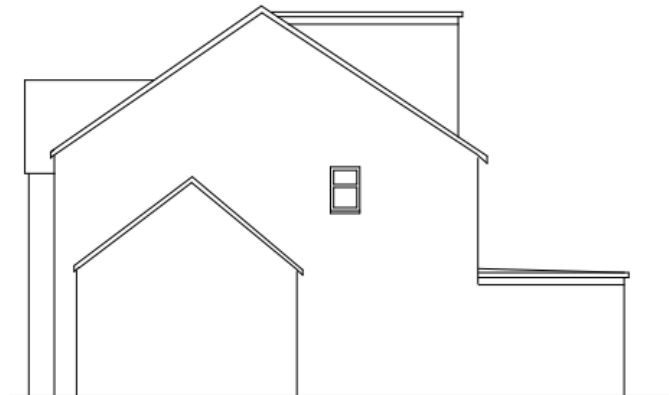
existing front elevation



existing side elevation



existing back elevation



existing side elevation

www.oxford.gov.uk



**OXFORD
CITY
COUNCIL**

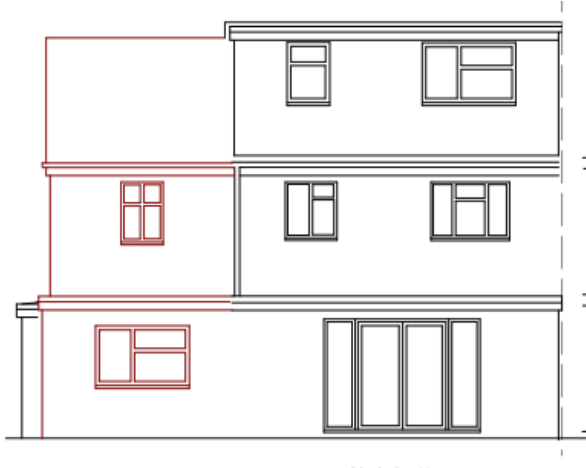


Proposed Elevations

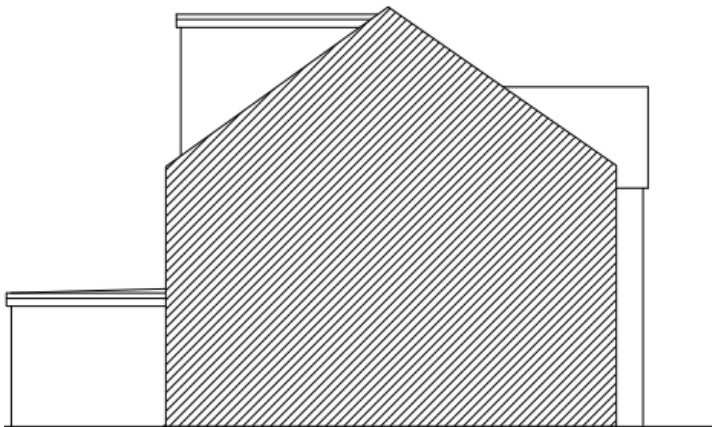
68



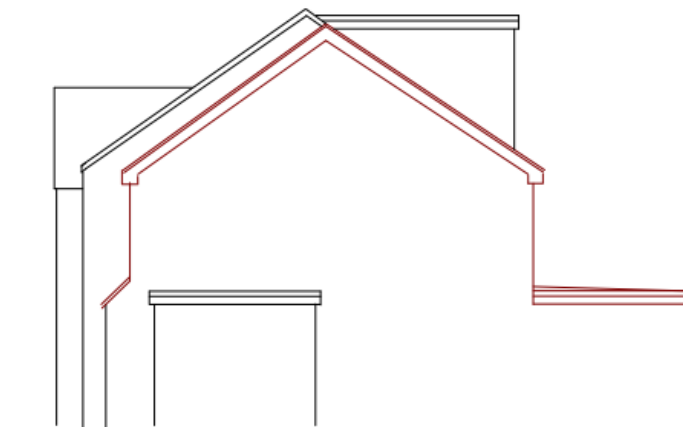
proposed front elevation



proposed back elevation



proposed side elevation



proposed side elevation

www.oxford.gov.uk



This page is intentionally left blank